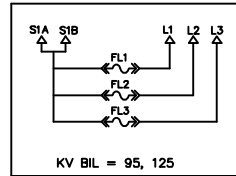


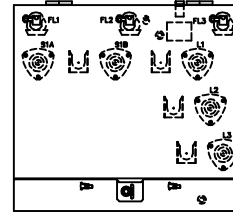
SCHEMATIC
DIAGRAM

FRONT
PANEL

BAYONET FUSE



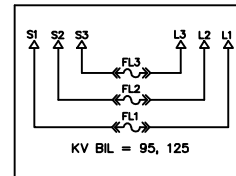
FP101



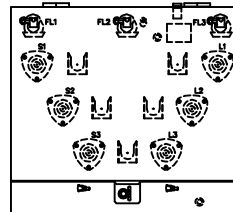
16" DOOR

36"Wx28"Dx32"H

BAYONET FUSE



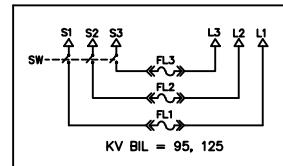
FP102



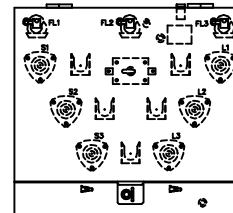
20" DOOR

36"Wx33"Dx32"W

BAYONET FUSE
ON-OFF SW



FP103



20" DOOR

36"Wx40"Dx32"H

REVISION					
REV.	DESCRIPTION	DATE	BY:	DATE	APPD:
1	REDRAWN	5-16-02	JCS	5-16-02	AG
2	REDRAWN	10-1-02	JCS	10-1-02	AG
3	"D" WAS 29" FP 101 & 33" FP 102 "W" WAS 36" FP 102 & 103	2-7-03	JCS	2-7-03	AG
4	"W" WAS 32" FP 102 & 103	11-24-03	JCS	11-24-03	AG
5	"D" WAS 27" FP 101, 31" FP 102 & 33" FP 103	6-14-04	JCS	6-14-04	CJD



ERMCO

TITLE: ECO-PAD COMPOSITE
TYPE 1

SIZE
A

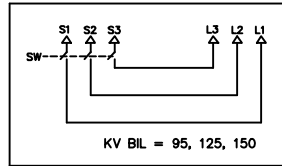
DWN. BY: JCT	DATE: 3-28-01
APPD. BY: AG	DATE: 3-28-01
REV. ISSUE DATE: 6-14-04	SCALE: NTS

DRAWING NUMBER
PAGE 1
350221-99

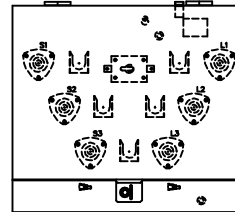
SCHEMATIC
DIAGRAM

FRONT
PANEL

ON-OFF SW



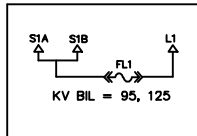
FP104



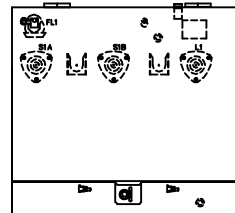
36"Wx40"Dx32"H

20" DOOR

BAYONET FUSE



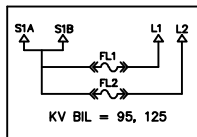
FP105



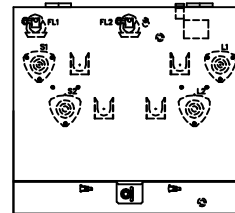
34"Wx29"Dx32"H

16" DOOR

BAYONET FUSE



FP106



34"Wx29"Dx32"H

16" DOOR

REVISION

REV.	DESCRIPTION	DATE	BY:	DATE	APPD:
1	ADDED FP107 & FP 108	11-9-01	JCT	11-9-01	AG
2	REDRAWN	5-16-02	JCS	5-16-02	AG
3	REDRAWN	10-1-02	JCS	10-1-02	AG
4	"W" WAS 36" ALL & "D" WAS 29" 105 & 106	2-7-03	JCS	2-7-03	AG
5	"W" WAS 32" ON ALL	11-24-03	JCS	11-24-03	AG
6	"D" WAS 33" FP104, & 27" ON FP 105 & 106	6-14-04	JCS	6-14-04	CJD



TITLE: ECO-PAD COMPOSITE
TYPE 1

SIZE
A

DWN. BY: JCT

DATE: 3-28-01

DRAWING NUMBER

APPD. BY: AG

DATE: 3-28-01

PAGE 2

REV. ISSUE DATE: 6-14-04

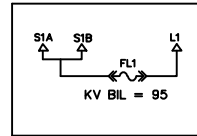
SCALE: NTS

350221-99

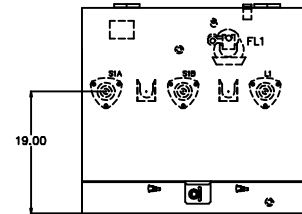
SCHEMATIC
DIAGRAM

FRONT
PANEL

EL BAYONET



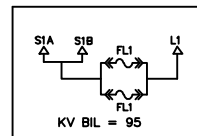
FP107



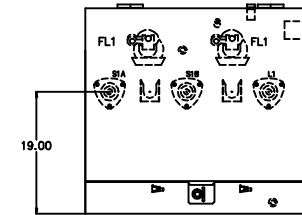
34"Wx29"Dx32"H

16" DOOR

EL BAYONET



FP109



34"Wx36"Dx32"H

16" DOOR

REV	DESCRIPTION	DATE	BY:	DATE	APPD:
1	REDRAWN	5-16-02	JCS	5-16-02	AG
2	REDRAWN	10-1-02	JCS	10-1-02	AG
3	FP107 & FP109 "D" WAS 41"	12-11-02	JCS	12-11-02	AG
4	REMOVED FP108	12-19-02	JCS	12-19-02	AG
5	"W" WAS 36", 107 D WAS 29", 109 D WAS 36"	2-7-03	JCS	2-7-03	AG
6	"W" WAS 32"	11-24-03	JCS	11-24-03	AG
7	"D" WAS 27" ON FP 107 & 109	6-14-04	JCS	6-14-04	CJD
8	REMOVED 125 BIL FROM FP109	7-15-09	JCS	7-15-09	AG



ERMCO

TITLE: ECO-PAD COMPOSITE
TYPE 1

SIZE
A

DWN. BY: JCS

DATE: 3-5-02

DRAWING NUMBER

APPD. BY: AG

DATE: 3-5-02

PAGE 3

REV. ISSUE DATE: 7-15-09

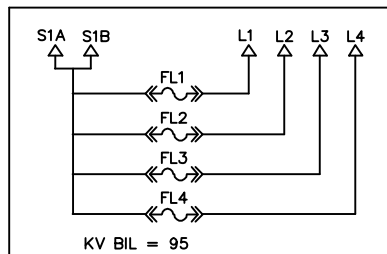
SCALE: NTS

350221-99

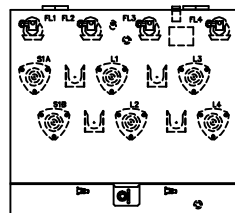
SCHEMATIC
DIAGRAM

FRONT
PANEL

BAYONET FUSE



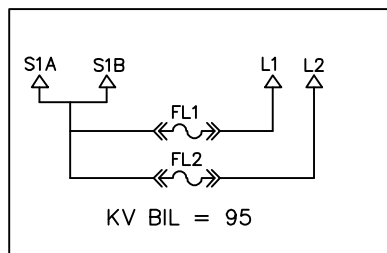
FP110



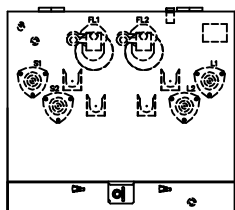
16" DOOR

36"Wx29"Dx32"H

EL BAYONET FUSE



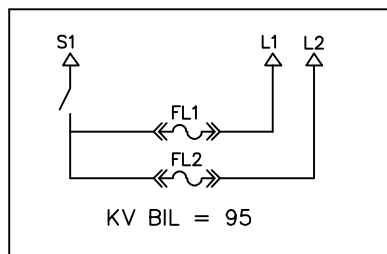
FP111



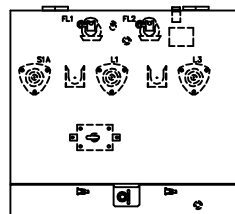
16" DOOR

36"Wx29"Dx32"H

BAYONET FUSE



FP112



16" DOOR

34"Wx29"Dx32"H

REV.	DESCRIPTION	DATE	BY:	DATE	APPD:
1	FP110 WAS 36"Wx29"Dx32"H	02-07-03	JCS	2-7-03	AG
2	FP110 WAS 32"Wx29"Dx32"H, ADD FP111 & ADD FP112	06-26-03	JCS	6-26-03	JCS
3	FP112 WAS 32" W	11-24-03	JCS	11-24-03	AG
4	"D" WAS 27" ON FP 110 & 30" ON FP 111 & FP 112	6-15-04	JCS	6-15-04	CJD

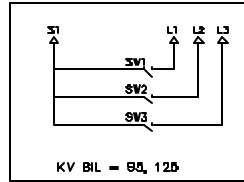


TITLE: ECO-PAD COMPOSITE TYPE 1		SIZE A
DWN. BY: JCS	DATE: 12-13-02	DRAWING NUMBER PAGE 4 350221-99
APPD. BY: AG	DATE: 12-13-02	
REV. ISSUE DATE: 6-15-04	SCALE: NTS	

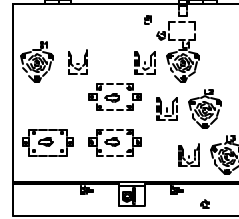
SCHEMATIC
DIAGRAM

FRONT
PANEL

ON-OFF SW



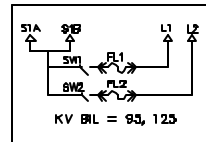
FP113



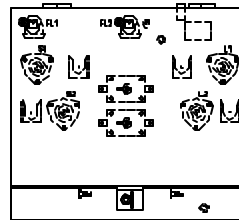
16" DOOR

36"Wx32"Dx32"H

BAYONET FUSE
ON-OFF SW



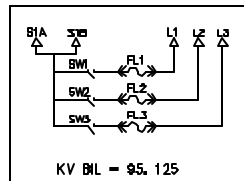
FP114



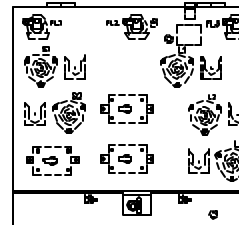
16" DOOR

36"Wx29"Dx32"H

BAYONET FUSE
ON-OFF SW



FP115



16" DOOR

36"Wx29"Dx32"H

REVISION

REV.	DESCRIPTION	DATE	BY:	DATE	APPD:
1	ADDED FP114 & 115	01-09-04	JCS	01-09-04	AG
2	"D" WAS 30" ON FP 113 & 27" ON FP 114 & FP 115	6-15-04	JCS	6-15-04	CJD
3	FP115 ON-OFF SW WERE ALL 3 DOWN CENTER	6-18-04	JCS	6-18-04	CJD
4	FP113 WAS ALL SW IN ROW	03-23-05	JCS	03-23-05	CJD
5	FP114 WAS 34" W	03-30-10	JCS	03-30-10	JDP



ERMCO

TITLE: ECO-PAD COMPOSITE
TYPE 1

SIZE
A

DWN. BY: JCS

DATE: 7-15-03

DRAWING NUMBER

APPD. BY: AG

DATE: 7-15-03

REV. ISSUE DATE: 3-30-10

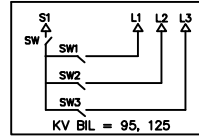
SCALE: NTS

PAGE 5
350221-99

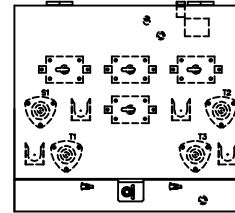
SCHEMATIC
DIAGRAM

FRONT
PANEL

ON-OFF SW



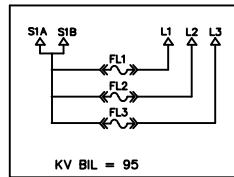
FP116



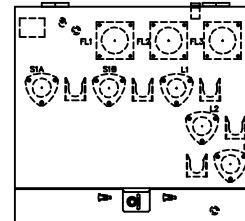
24" DOOR

36"Wx37"Dx32"H

DRY-WELL CANISTER



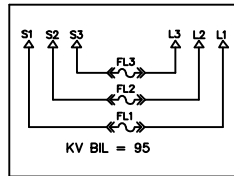
FP117



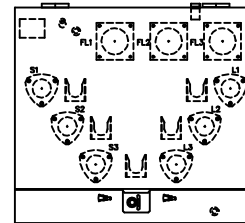
16" DOOR

36"Wx36"Dx32"H

DRY-WELL CANISTER



FP118



20" DOOR

36"Wx41"Dx32"H

REVISION

REV.	DESCRIPTION	DATE	BY:	DATE	APPD:
1	ADDED FP117	1-26-04	JCS	1-26-04	AG
2	ADDED FP118	3-3-04	JCS	3-3-04	CJD
3	SW WERE ALL DOWN CENTER FP116	5-21-04	JCS	5-21-04	CJD
4	"D" WAS 27" ON FP 116 & 38" ON FP 117 & FP 118	6-15-04	JCS	6-15-04	CJD
5	FP 116 D WAS 29" DOOR WAS 16"	12-15-05	JCS	12-15-05	CJD
6	FP 116 D WAS 33" DOOR WAS 20"	12-20-05	JCS	12-20-05	CJD
7	FP 118 D WAS 36" DOOR WAS 16" KV BIL WAS 95, 125	11-15-07	JCS	11-15-07	TJ



ERMCO

TITLE: ECO-PAD COMPOSITE
TYPE 1

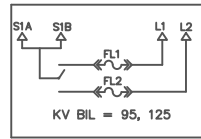
SIZE
A

DWN. BY: JCS	DATE: 1-16-04	DRAWING NUMBER PAGE 6 350221-99
APPD. BY: AG	DATE: 1-16-04	
REV. ISSUE DATE: 11-15-07	SCALE: NTS	

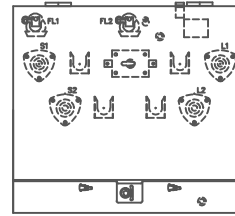
SCHEMATIC
DIAGRAM

FRONT
PANEL

BAYONET FUSE
3 POS. SW



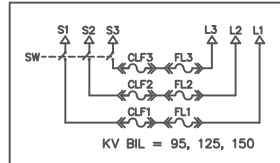
FP119



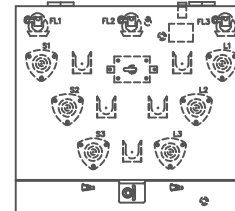
34"Wx29"Dx32"H

16" DOOR

BAYONET FUSE
ON-OFF SW
3 CLF



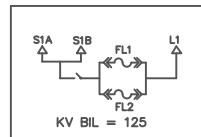
FP120



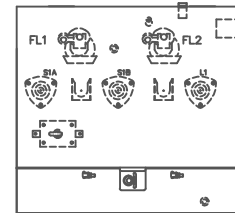
36"Wx40"Dx32"H

20" DOOR

EL BAYONET
SWITCH



FP121



36"Wx38"Dx38"H

18" DOOR
11" TALL SILL

REVISION					
REV.	DESCRIPTION	DATE	BY:	DATE	APPD:
1	ADDED FP120	5-26-04	JCS	5-26-04	CJD
2	"D" WAS 27" ON FP119 & 33" ON 120	6-15-04	JCS	6-15-04	CJD
3	ADDED FP121	11-15-04	JCS	11-15-04	CJD
4	FP121 SCHEMATIC DIDN'T SHOW SW	12-13-04	JCS	12-13-04	CJD
5	REMOVED 125 BIL FROM 121	7-15-09	JCS	7-15-09	AG
6	FP 121 PARALLEL FUSING WAS FL1 & FL1	4-26-10	JCS	4-26-10	JDP
7	RE'D 95 BIL & ADDED 125 BACK TO 121	10-20-10	JCS	10-20-10	BL

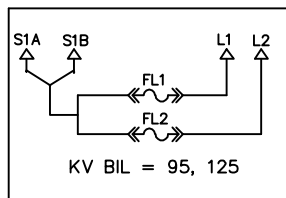
 **ERMCO**

TITLE: ECO-PAD COMPOSITE TYPE 1		SIZE A
DWN. BY: JCS	DATE: 4-19-04	DRAWING NUMBER PAGE 7 350221-99
APPD. BY: CJD	DATE: 4-19-04	
REV. ISSUE DATE: 10-20-10	SCALE: NTS	

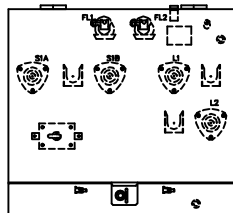
SCHEMATIC
DIAGRAM

FRONT
PANEL

BAYONET FUSE
V-BLADE SW



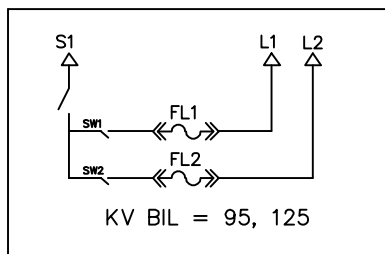
FP123



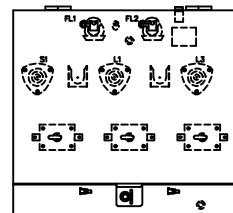
36" W x 30" D x 32" H

16" DOOR

BAYONET FUSE
ON-OFF SW



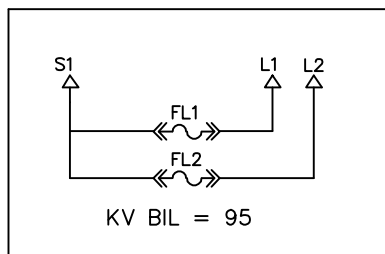
FP124



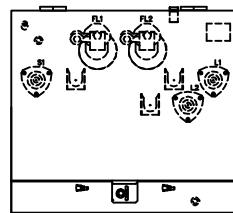
36" W x 29" D x 32" H

16" DOOR

EL BAYONET FUSE



FP125



36" W x 29" D x 32" H

16" DOOR

REVISION					
REV.	DATE:	BY:	DATE:	APPD:	
1	ADDED FP 124	1-10-07	JCS	1-10-07	BL
2	ADDED FP 125	7-20-07	JCS	7-20-07	BL
3					
4					



TITLE: ECO-PAD COMPOSITE
TYPE 1

SIZE
A

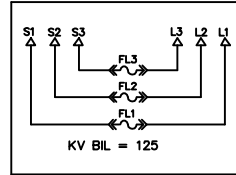
DWN. BY: JCS	DATE: 8-29-05
APPD. BY: CJD	DATE: 8-29-05
REV. ISSUE DATE: 7-20-07	SCALE: NTS

DRAWING NUMBER
PAGE 8
350221-99

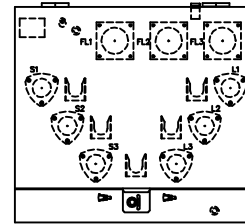
SCHEMATIC
DIAGRAM

FRONT
PANEL

DRY-WELL CANISTER

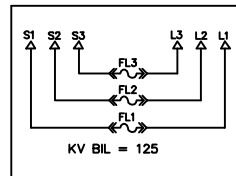


FP126

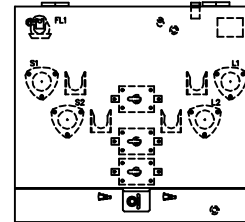


36"Wx46"Dx32"H

20" DOOR

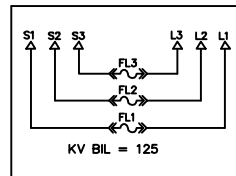


FP???

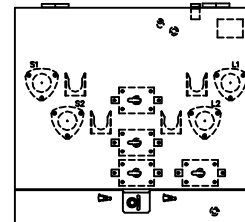


36"Wx46"Dx32"H

??" DOOR



FP???



36"Wx46"Dx32"H

??" DOOR

REVISION					
REV.	DESCRIPTION	DATE	BY:	DATE	APPD:
1	ADDED FP??? & FP???	05-07-09	JCS		
2					
3					
4					
5					
6					
7					
8					
9					



ERMCO

TITLE: ECO-PAD COMPOSITE
TYPE 1

SIZE
A

DWN. BY: JCS DATE: 11-15-07

DRAWING NUMBER

APPD. BY: TJ DATE: 11-15-07

PAGE 9

REV. ISSUE DATE: 5-7-09

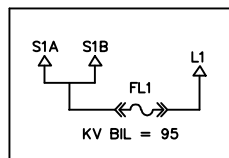
SCALE: NTS

350221-99

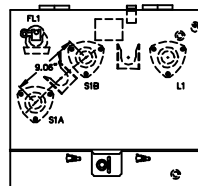
SCHEMATIC
DIAGRAM

FRONT
PANEL

BAYONET FUSE



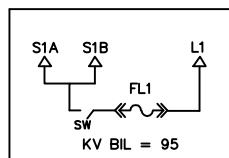
FP001



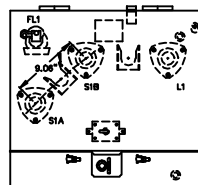
26"Wx28"Dx24"H

16" DOOR
(W/POLY PAD 20" DOOR)

BAYONET FUSE
LB SWITCH



FP002



26"Wx28"Dx24"H

16" DOOR
(W/POLY PAD 20" DOOR)

REVISION

REV.	DESCRIPTION	DATE	BY:	DATE	APPD:
1	ADDED POLY PAD TO 001 & 002	7-15-09	JCS	7-15-09	AG
2					
3					
4					
5					



ERMCO

TITLE: ECO-PAD COMPOSITE
TYPE 2

SIZE
A

DWN. BY: JCS DATE: 6-2-06

DRAWING NUMBER

APPD. BY: CJD DATE: 6-2-06

PAGE .5

REV. ISSUE DATE: 7-15-09

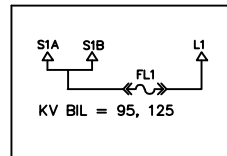
SCALE: NTS

350223-00

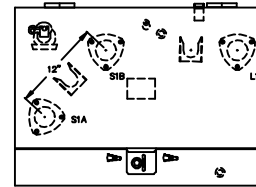
SCHEMATIC
DIAGRAM

FRONT
PANEL

BAYONET FUSE



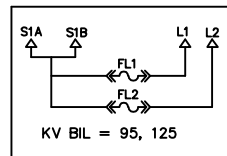
FP201



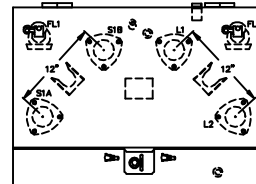
34" W x 28" D x 24" H

16" DOOR

BAYONET FUSE



FP202



34" W x 28" D x 24" H

16" DOOR

REVISION

REV.	DESCRIPTION	DATE	BY:	DATE	APPD:
1	REDRAWN	5-16-02	JCT	5-16-02	AG
2	REDRAWN	9-30-02	JCS	9-30-02	AG
3	"D" WAS 29" ON ALL & "W" WAS 34" ON 201 & 202	2-7-03	JCS	2-7-03	AG
4	"W" WAS 32 ON 201 & 202	11-21-03	JCS	11-21-03	AG
5	"D" WAS 27" ON FP 001, 201, & 202	6-15-04	JCS	6-15-04	CJD
6	REMOVED FP 001, NOW ON PAGE .5	6-2-06	JCS	6-2-06	CT



ERMCO

TITLE: ECO-PAD COMPOSITE
TYPE 2

SIZE
A

DWN. BY: JCT

DATE: 3-28-01

DRAWING NUMBER

APPD. BY: AG

DATE: 3-28-01

PAGE 1

REV. ISSUE DATE: 6-2-06

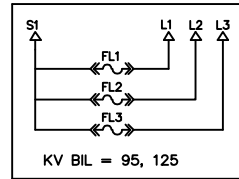
SCALE: NTS

350223-00

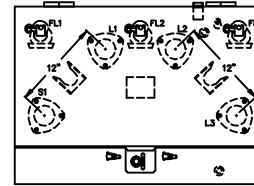
SCHEMATIC
DIAGRAM

FRONT
PANEL

BAYONET FUSE

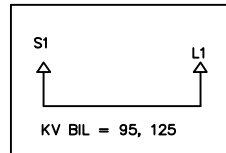


FP203

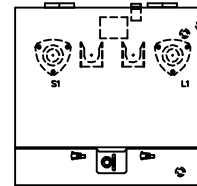


34"Wx28"Dx24"H

16" DOOR

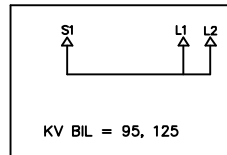


FP204

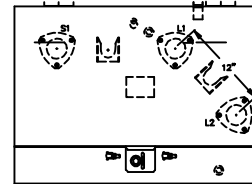


26"Wx28"Dx24"H

16" DOOR
(POLY PAD 20" DOOR)



FP205



34"Wx28"Dx24"H

16" DOOR

REVISION

REV.	DESCRIPTION	DATE	BY:	DATE	APPD:
1	ADDED FP206 & FP207	4-11-01	JCT	4-11-01	AG
2	REDRAWN	5-16-02	JCS	5-16-02	AG
3	REDRAWN	9-30-02	JCS	9-30-02	AG
4	"D" WAS 29" ON ALL & "W" WAS 34" ON 203 & 205	2-7-03	JCS	2-7-03	AG
5	"W" WAS 32 ON 203 & 205	11-21-03	JCS	11-21-03	AG
6	"D" WAS 27" ON FP 203, 204, & 205	6-15-04	JCS	6-15-04	CJD
7	ADDED POLY PAD TO FP204	7-15-09	JCS	7-15-09	AG



ERMCO

TITLE: ECO-PAD COMPOSITE
TYPE 2

SIZE
A

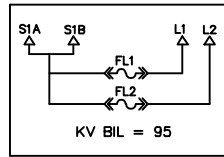
DWN. BY: JCT DATE: 3-28-01
APPD. BY: AG DATE: 3-28-01
REV. ISSUE DATE: 7-15-09 SCALE: NTS

DRAWING NUMBER
PAGE 2
350223-00

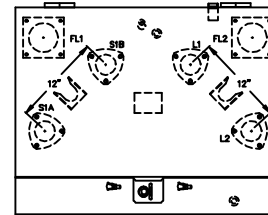
SCHEMATIC
DIAGRAM

FRONT
PANEL

DRYWELL FUSE



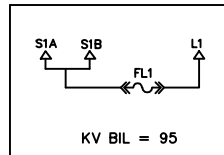
FP206



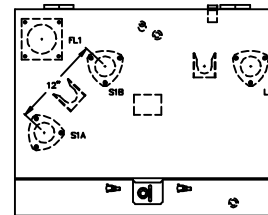
36"Wx36"Dx28"H

16" DOOR

DRYWELL FUSE



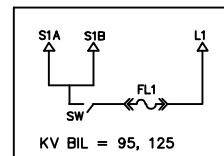
FP207



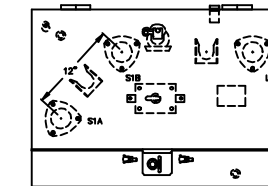
36"Wx36"Dx28"H

16" DOOR

BAYONET FUSE
ON-OFF SW



FP208



34"Wx28"Dx24"H

16" DOOR

REVISION

REV.	DESCRIPTION	DATE	BY:	DATE	APPD:
1	ADDED FP209& FP210	02-26-02	JCS	02-26-02	AG
2	REDRAWN	5-16-02	JCS	5-16-02	AG
3	ADDED FP211	07-25-02	JCS	07-25-02	AG
4	REDRAWN	10-01-02	JCS	10-01-02	AG
5	FP208 WAS 34"Wx29"Dx24"H	2-7-03	JCS	2-7-03	AG
6	"W" WAS 32" ON FP208	11-21-03	JCS	11-21-03	AG
7	"D" WAS 39" ON FP 206 & 207 "D" WAS 27" ON FP 208	6-15-04	JCS	6-15-04	CJD



ERMCO

TITLE: ECO-PAD COMPOSITE
TYPE 2

SIZE
A

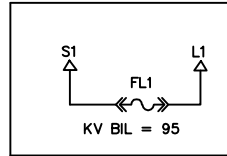
DWN. BY: JCT DATE: 4-23-01
APPD. BY: AG DATE: 4-23-01
REV. ISSUE DATE: 6-15-04 SCALE: NTS

DRAWING NUMBER
PAGE 3
350223-00

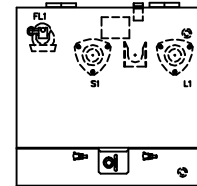
SCHEMATIC
DIAGRAM

FRONT
PANEL

BAYONET FUSE



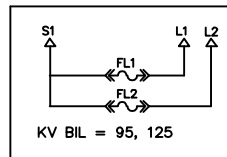
FP209



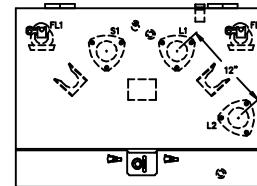
26"Wx28"Dx24"H

16" DOOR
(W/POLY PAD 20" DOOR)

BAYONET FUSE



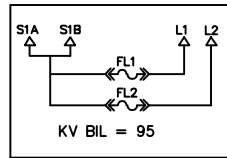
FP210



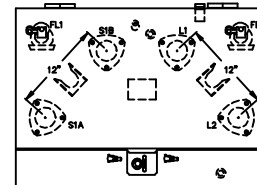
34"Wx28"Dx24"H

16" DOOR

EL BAYONET



FP211



36"Wx29"Dx26"H

16" DOOR

REVISION

REV.	DESCRIPTION	DATE	BY:	DATE	APPD:
1	REDRAWN	10-1-02	JCS	10-1-02	AG
2	FP209 WAS "D" 29" & FP210 WAS 34"W, 29"D	2-7-03	JCS		
3	"W" WAS 32" ON FP210	11-21-03	JCS	11-21-03	AG
4	"D" WAS 27" ON FP209 & 210, 36" ON 211	6-15-04	JCS	6-15-04	CJD
5	REMOVED 125BIL FROM FP211, ADD POLY PAD TO FP 209	7-15-09	JCS	7-15-09	AG



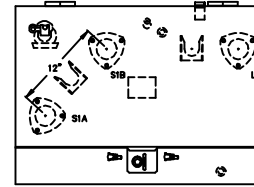
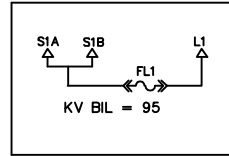
ERMCO

TITLE: ECO-PAD COMPOSITE TYPE 2		SIZE A
DWN. BY: JCS	DATE: 8-8-02	DRAWING NUMBER PAGE 4 350223-00
APPD. BY: AG	DATE: 8-8-02	
REV. ISSUE DATE: 7-15-09	SCALE: NTS	

SCHEMATIC
DIAGRAM

FRONT
PANEL

EL BAYONET

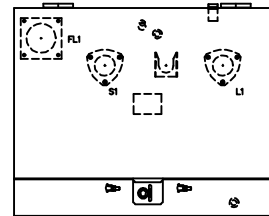
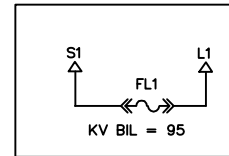


16" DOOR

FP212

36"Wx29"Dx26"H

DRYWELL FUSE

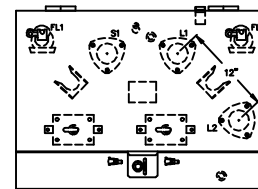
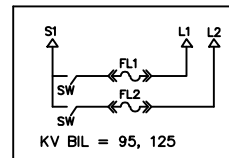


16" DOOR

FP213

34"Wx36"Dx24"H

BAYONET FUSE
ON-OFF SW



16" DOOR

FP214

34"Wx28"Dx24"H

REVISION

REV.	DESCRIPTION	DATE	BY:	DATE	APPD.:
1	ADDED FP213	10-23-02	JCS	10-23-02	AG
2	ADDED FP214	2-25-03	JCS	2-25-03	AG
3	"W" WAS 32" ON FP 213 & 214	11-21-03	JCS	11-21-03	AG
4	"D" WAS 26" ON FP212 & 39" ON 213 & 27" ON 214	6-15-04	JCS	6-15-04	CJD
5	REMOVED KV BIL=125 FROM FP 212	1-5-05	JCS	1-5-05	CJD



ERMCO

TITLE: ECO-PAD COMPOSITE
TYPE 2

SIZE
A

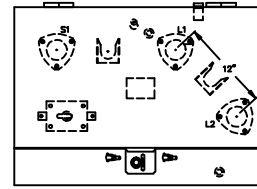
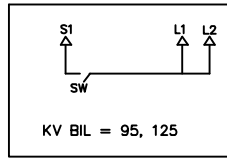
DWN. BY: JCS DATE: 10-01-02
APPD. BY: AG DATE: 10-01-02
REV. ISSUE DATE: 1-5-05 SCALE: NTS

DRAWING NUMBER
PAGE 5
350223-00

SCHEMATIC
DIAGRAM

FRONT
PANEL

ON-OFF SW

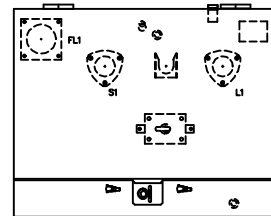
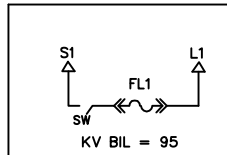


16" DOOR

FP215

34"Wx28"Dx24"H

DRYWELL FUSE
ON-OFF SW

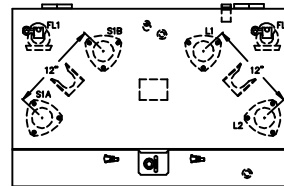
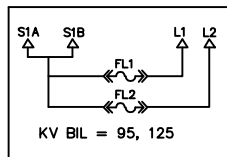


16" DOOR

FP216

34"Wx36"Dx24"H

BAYONET FUSE



16" DOOR

FP217

36"Wx28"Dx24"H



ERMCO

REVISION

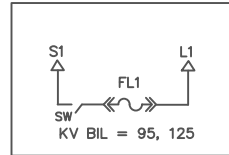
REV.	DESCRIPTION	DATE	BY:	DATE	APPD:
1	"W" WAS 32" ON FP215	11-21-03	JCS	11-21-03	AG
2	ADD FP216	12-10-03	JCS	12-10-03	AG
3	"D" WAS 39" ON FP 216	6-15-04	JCS	6-15-04	CJD
4	ADD FP217	7-13-04	JCS	7-13-04	CJD

TITLE: ECO-PAD COMPOSITE TYPE 2		SIZE A
DWN. BY: JCS	DATE: 7-29-03	DRAWING NUMBER PAGE 6 350223-00
APPD. BY: AG	DATE: 7-29-03	
REV. ISSUE DATE: 7-13-04	SCALE: NTS	

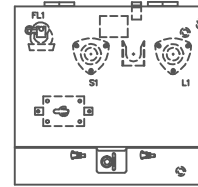
SCHEMATIC
DIAGRAM

FRONT
PANEL

BAYONET FUSE
ON-OFF SW



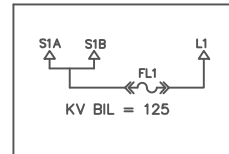
FP218



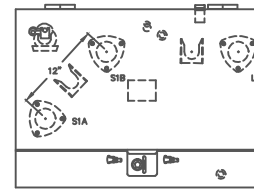
26"Wx29"Dx24"H

16" DOOR
(W/POLY PAD 20" DOOR)

EL BAYONET



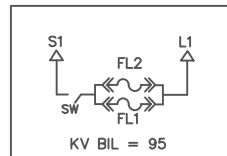
FP222



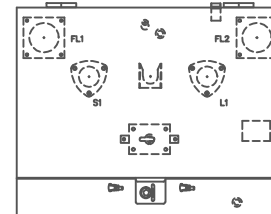
36"Wx36"Dx26"H

16" DOOR

DRYWELL PARALLEL FUSE
ON-OFF SW



FP223



36"Wx36"Dx28"H

16" DOOR

REVISION

REV.	DESCRIPTION	DATE	BY:	DATE	APPD:
1	ADDED FP218	7-19-05	JCS	7-19-05	CJD
2	ADDED FP225	8-29-05	JCS	8-29-05	CJD
3	removed FP225 & added fp223	2-9-06	JCS	2-9-06	CJD
4	ADDED POLY... TO 218, BIL ON 222 WAS 125	7-16-09	JCS	7-16-09	AG
5	REMOVED 95 BIL & ADDED 125 TO FP222	10-20-10	JCS	10-20-10	BL



ERMCO

TITLE: ECO-PAD COMPOSITE
TYPE 2

SIZE
A

DWN. BY: JCS

DATE: 1-5-05

DRAWING NUMBER

APPD. BY: CJD

DATE: 1-5-05

PAGE 7

REV. ISSUE DATE: 10-20-10

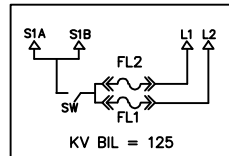
SCALE: NTS

350223-00

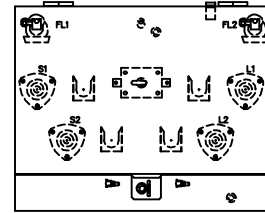
SCHEMATIC
DIAGRAM

FRONT
PANEL

BAYONET FUSE
ON-OFF SW



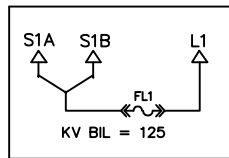
FP224



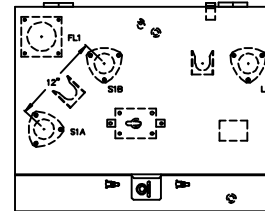
36"Wx32"Dx28"H

16" DOOR

DRYWELL
V-BLADE SW



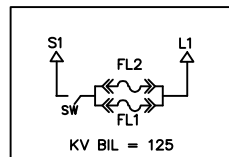
FP225



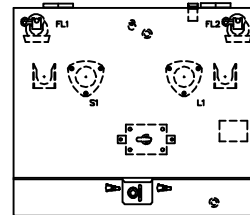
36"Wx41"Dx28"H

16" DOOR

BAYONET FUSE
ON-OFF SW



FP226



34"Wx29"Dx24"H

16" DOOR

REVISION

REV.	DESCRIPTION	DATE	BY:	DATE	APPD:
1	ADDED FP224 & FP226	4-17-06	JCS	4-17-06	CD
2	CHD FP225 FROM T-BLADE	11-27-06	JCS	11-27-06	BL
3					
4					



ERMCO

TITLE: ECO-PAD COMPOSITE
TYPE 2

SIZE
A

DWN. BY: JCS

DATE: 8-29-05

DRAWING NUMBER

APPD. BY: CJD

DATE: 8-26-05

PAGE 8

REV. ISSUE DATE: 11-27-06

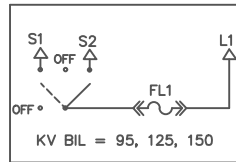
SCALE: NTS

350223-00

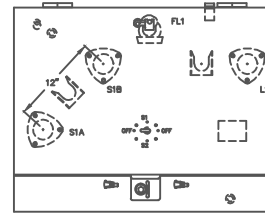
SCHEMATIC
DIAGRAM

FRONT
PANEL

BAYONET FUSE
4 POSITION SWITCH



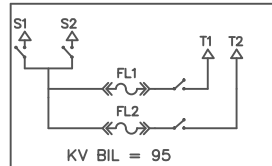
FP227



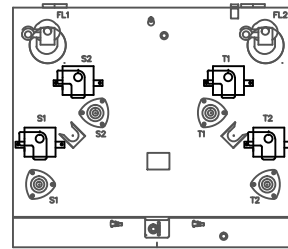
34"Wx28"Dx24"H

16" DOOR

EL BAYONET
ON-OFF SWITCH



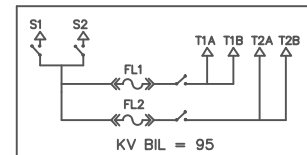
FP228



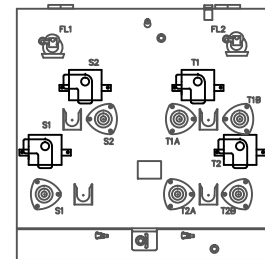
36"Wx30"Dx32"H

16" DOOR

BAYONET FUSE
ON-OFF SWITCH
(NO EMOSS ON BU)



FP229



36"Wx30"Dx36"H

16" DOOR

REVISION

REV.	DESCRIPTION	DATE	BY:	DATE	APPD:
1	ADDED ITEM 230	4-16-10	JCS	4-16-10	JDP
2	ADDED ITEM 228 & 229, RM'D 230	9-22-10	JCS	9-22-10	JDP
3					
4					



ERMCO

TITLE: ECO-PAD COMPOSITE
TYPE 2

SIZE
A

DWN. BY: JCS

DATE: 6-22-09

DRAWING NUMBER

APPD. BY: TJ

DATE: 6-22-09

PAGE 9

REV. ISSUE DATE: 9-22-10

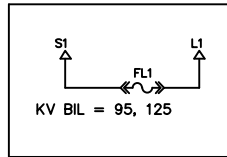
SCALE: NTS

350223-00

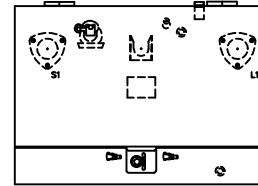
SCHEMATIC
DIAGRAM

FRONT
PANEL

BAYONET FUSE



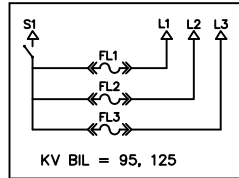
FP230



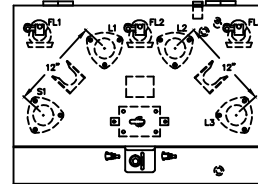
34"Wx28"Dx24"H

16" DOOR

BAYONET FUSE
ON OFF SWITCH



FP233



34"Wx28"Dx24"H

16" DOOR

REVISION

REV.	DESCRIPTION	DATE	BY:	DATE	APPD:
1	ADDED FP233	3-2-11	JCS		
2					
3					
4					



ERMCO

TITLE: ECO-PAD COMPOSITE
TYPE 2

SIZE
A

DWN. BY: JCS

DATE: 9-22-10

DRAWING NUMBER

APPD. BY: JDP

DATE: 9-22-10

PAGE 10

REV. ISSUE DATE: 3-2-11

SCALE: NTS

350223-00