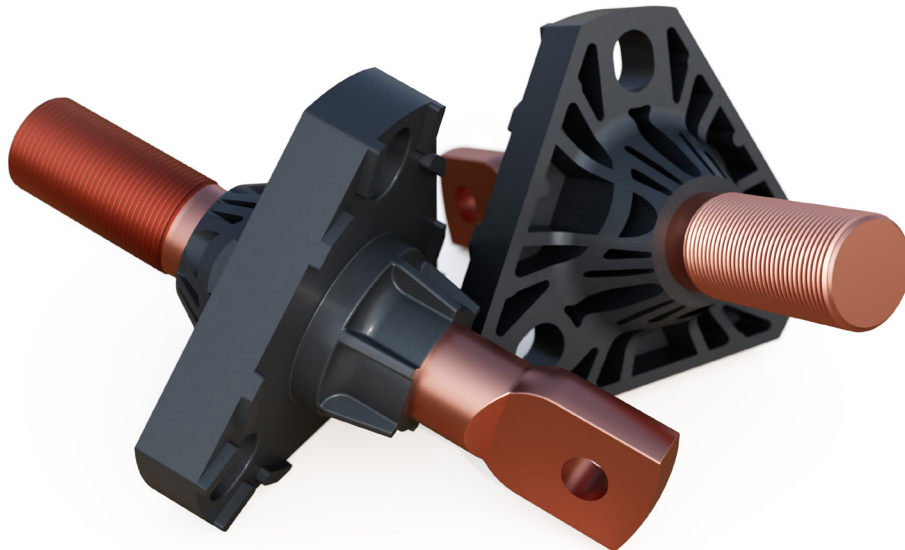


1,680A 1.2kV Class 1" Tri-Clamp Secondary Bushing



ERMCO Components
1607 Industrial Road
Greenville, TN 37745
Phone: (423) 638-2302
Toll Free: (877) 267-1855
Fax (423) 636-6492



Voltage Ratings and Characteristics

Description	kV
Standard Voltage Class	1.2
AC 60 Hz 1 Minute Withstand	10
BIL and Full Wave Crest	30

Current Ratings and Characteristics

Description	Amperes
100% Load Current	840 Amperes RMS Continuous
140% Load Current	1,180 Amperes RMS Continuous
200% Load Current Short Time Overload	1,680 Amperes RMS for 3 hours starting at 100% load continuous.

Current ratings and characteristics are in accordance with IEEE Std. C57.12.00™ standard

BEYOND THE STANDARD

Ordering Information

Table 1

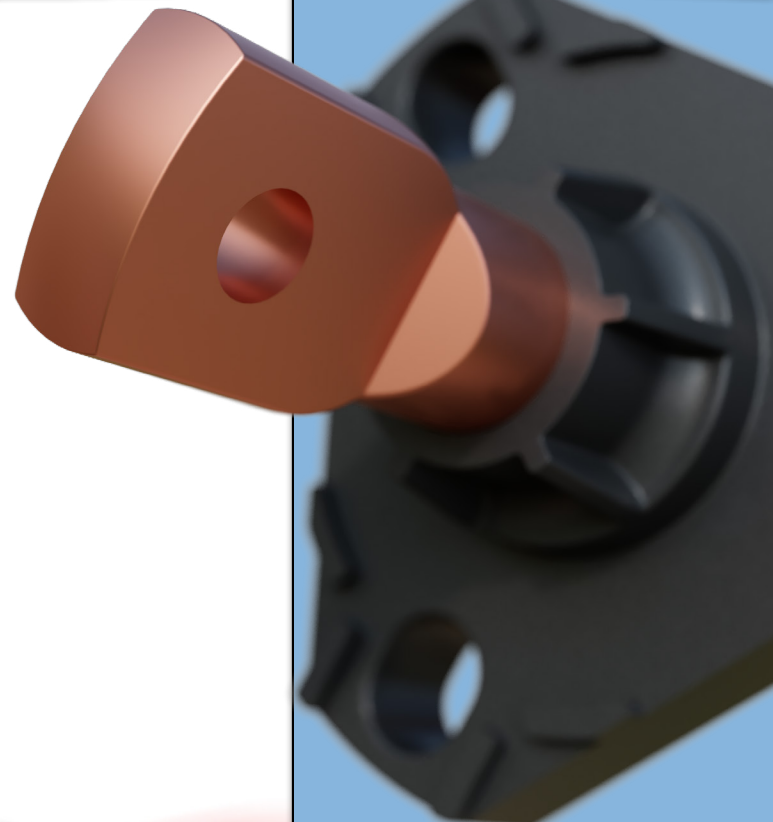
Tri-Clamp and Gasket

Catalog Number	Description
9U10TGA601	Tri-Clamp and Gasket Usable Thread - 1.75"
9U10TGA701	Tri-Clamp and Gasket Usable Thread - 2.25"
9U10TGA801	Tri-Clamp and Gasket Usable Thread - 3.00"

Table 2

Replacement Parts

Catalog Number	Description
9U10PRT005	Mounting Gasket
4391ZR1199	1"-14 Brass Hex Jam Nut 1/4" Thick
4391ZR1299	1"-14 Brass Hex Jam Nut 1/2" Thick



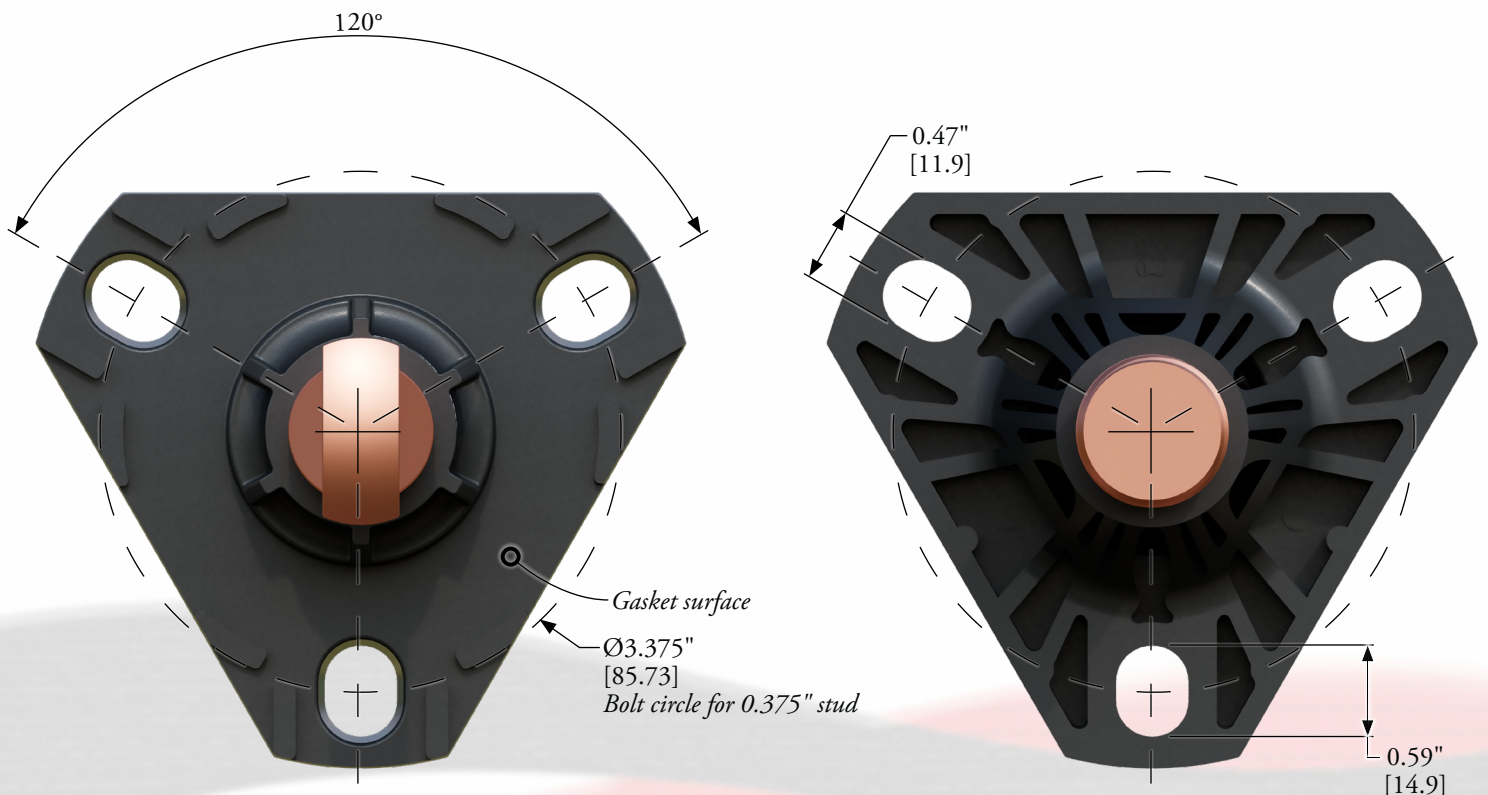
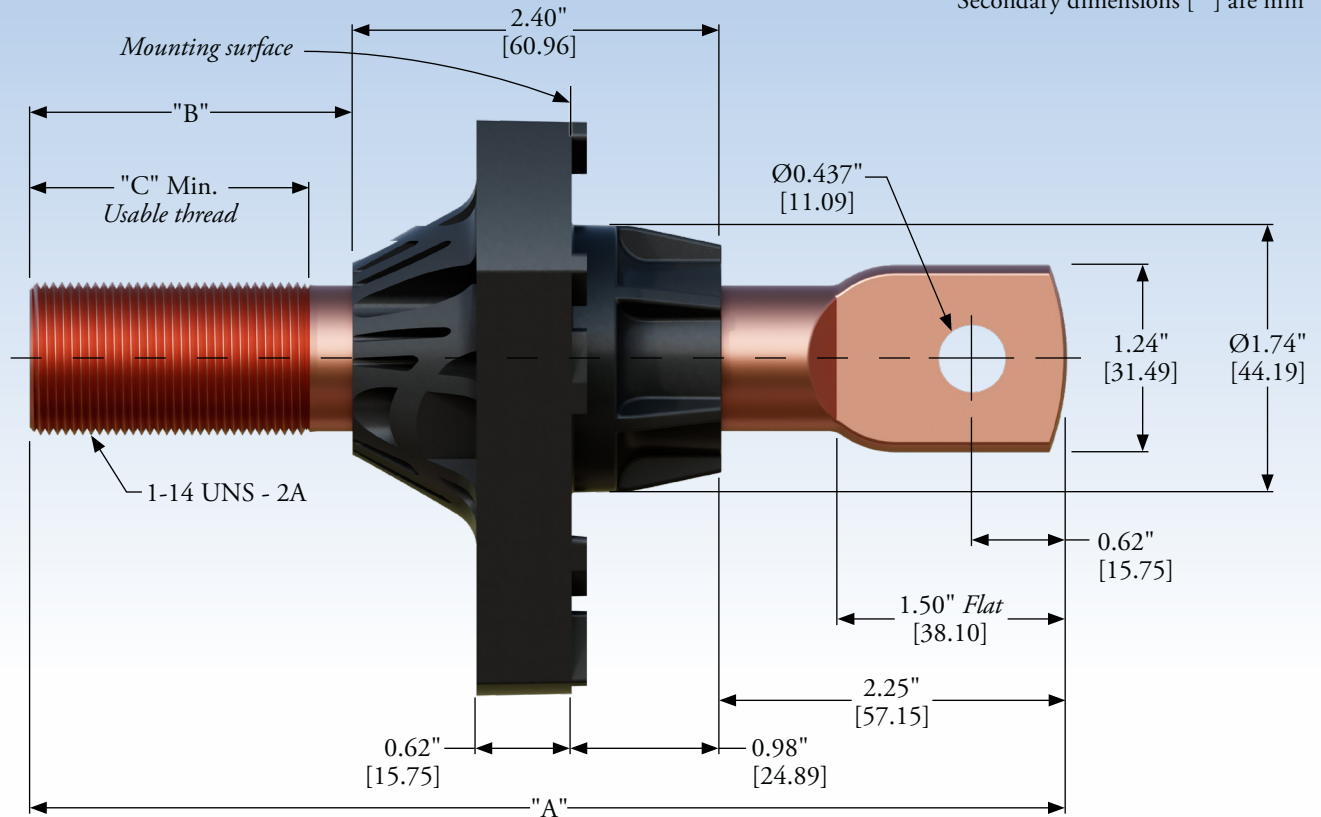
For more information about the secondary bushing, contact your Ermco Components representative or call (877) 267-1855

Dimensions and Details

Note: Dimensions are given for reference only

Catalog Number	A	B	C
9U10TGA601	6.75"	2.10"	1.75"
9U10TGA701	7.25"	2.60"	2.25"
9U10TGA801	8.00"	3.35"	3.00"

Primary dimensions are inches
Secondary dimensions [] are mm



Installation Details

Note: Dimensions are given for reference only

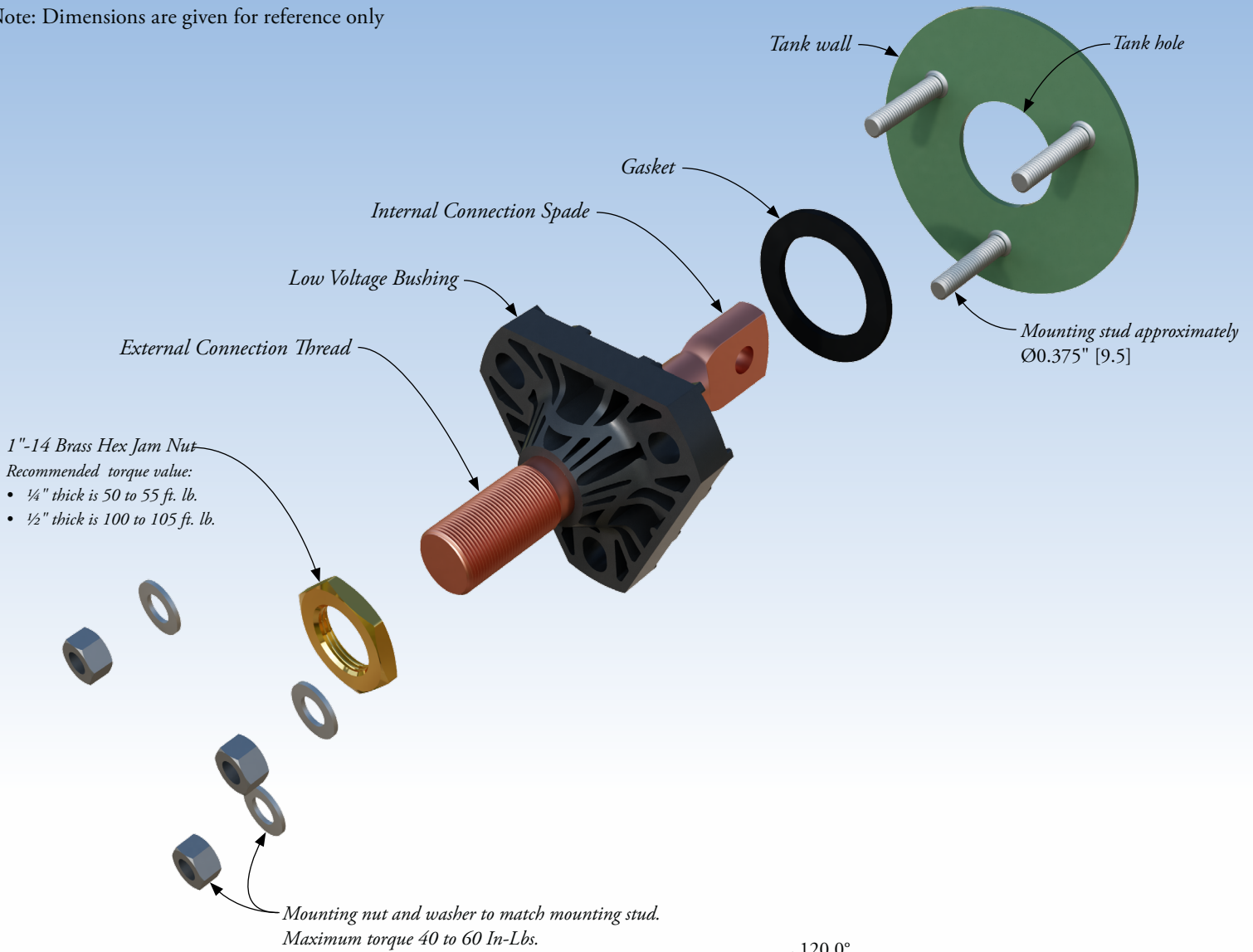


Figure 1
Mounting

Primary dimensions are inches
Secondary dimensions [] are mm

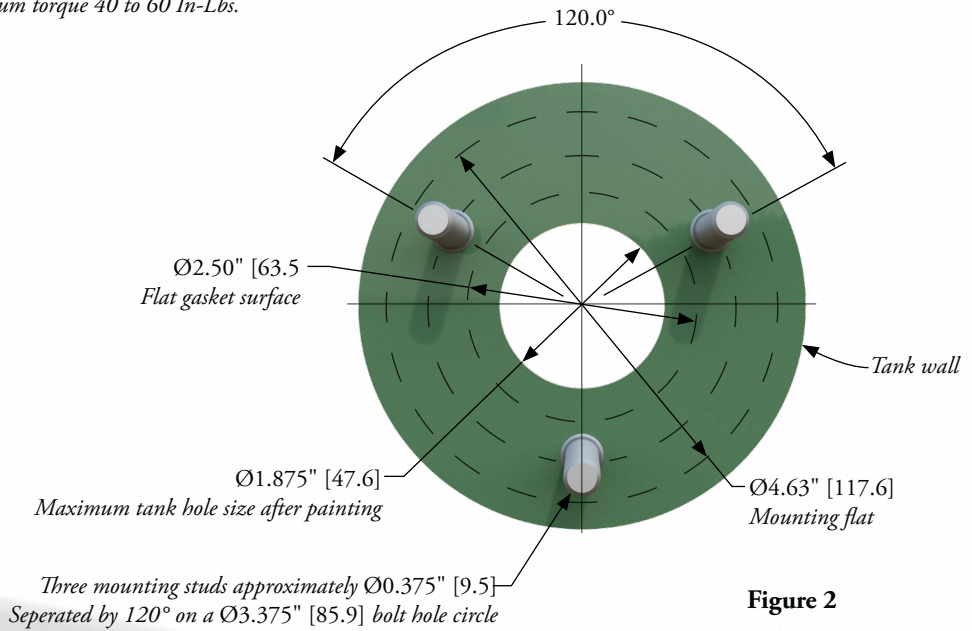


Figure 2
Bolt Pattern

Primary dimensions are inches
Secondary dimensions [] are mm

ERMCO Components Inc.
1607 Industrial Road
Greeneville, TN 37745



Phone: (423) 638-2302
Toll Free: (877) 267-1855
Fax (423) 636-6492