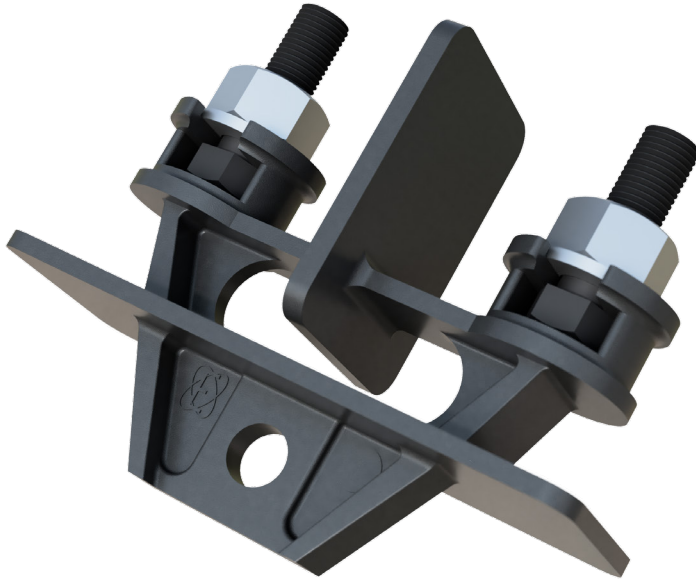


Double Pole Terminal Bracket



ECI, ERMCO Components Inc.
1607 Industrial Road
Greeneville, TN 37745
Phone: (423) 638-2302
Toll Free: (877) 267-1855
Fax (423) 636-6492



Design Advantages

- Superior Strength
- Durable glass-filled thermoplastic
- Installs in seconds
- Single or dual application option
- Improved mounting design for maximum performance installation

BEYOND THE STANDARD

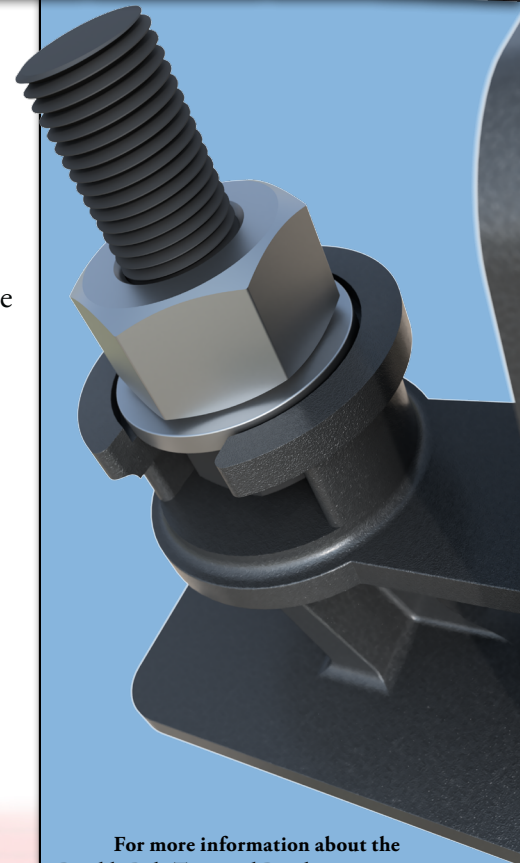
Double Pole Terminal Bracket – Catalog Number **7285ZA2499**

60Hz Withstand Test

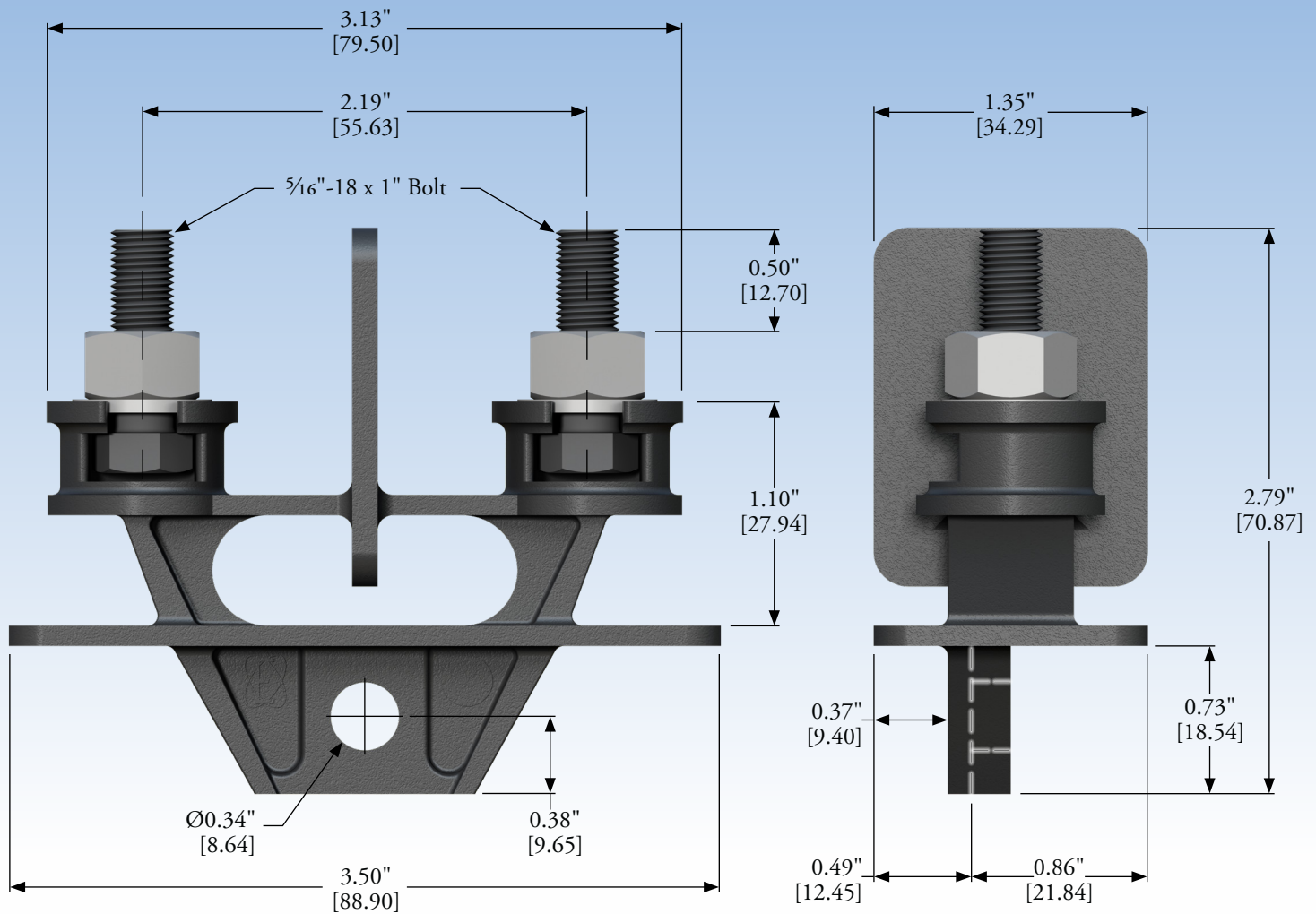
Voltage was applied between the mounting bolt and each of the terminal bolts and between the terminal bolts. The voltage was held for 60 seconds then reduce to half voltage. The terminal mount passed at 50kV in all configurations with no flashover or material breakdown. The Pico coulomb reading was below the 3pC threshold at 25kV (half voltage) demonstrating there are no voids or gaps in the terminal mount material.

Impulse Test

Three positive and three negative impulse shots were applied between the mounting bolt and each of the terminal bolts and between the terminal bolts. The double terminal mounting bracket passed all impulse tests and 165kV.

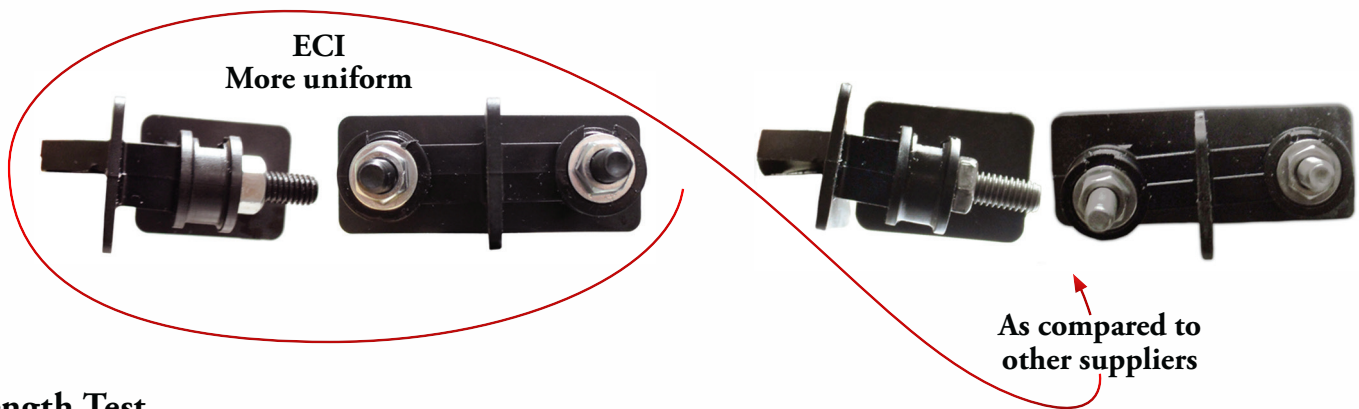


For more information about the Double Pole Terminal Bracket, contact your Ermco Components representative or call (877) 267-1855



PRIMARY DIMENSIONS ARE INCHES
SECONDARY DIMENSIONS [] ARE MM

Note: Dimensions are given for reference only.



Strength Test

- The bracket was bolted securely, and two 20-pound weights were attached (one to each terminal) without breaking.
- The Double Pole Terminal Bracket was mounted in an oil filled tank and one 20-pound weight was attached to both terminals. **The oil was heated to 130°C and held for 8 hours.** The terminal mount was allowed to cool with the weight attached until it reached room temperature. **The ECI bracket had minimal distortion observed with no breakdown in material as compared to the competitor bracket.**