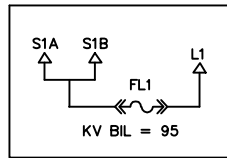


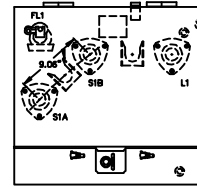
SCHEMATIC  
DIAGRAM

FRONT  
PANEL

BAYONET FUSE



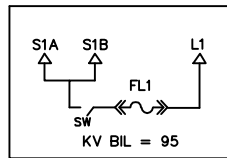
FP001



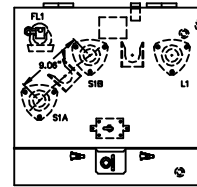
26"Wx28"Dx24"H

16" DOOR  
(W/POLY PAD 20" DOOR)

BAYONET FUSE  
LB SWITCH



FP002



26"Wx28"Dx24"H

16" DOOR  
(W/POLY PAD 20" DOOR)

REVISION

REV.	DESCRIPTION	DATE	BY:	DATE	APPD:
1	ADDED POLY PAD TO 001 & 002	7-15-09	JCS	7-15-09	AG
2					
3					
4					
5					



**ERMCO**

TITLE: ECO-PAD COMPOSITE  
TYPE 2

SIZE  
A

DWN. BY: JCS DATE: 6-2-06

DRAWING NUMBER

APPD. BY: CJD DATE: 6-2-06

PAGE .5

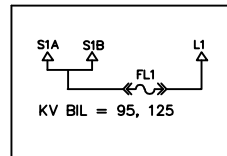
REV. ISSUE DATE: 7-15-09 SCALE: NTS

350223-00

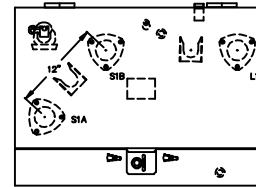
SCHEMATIC  
DIAGRAM

FRONT  
PANEL

BAYONET FUSE



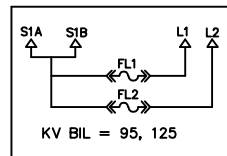
FP201



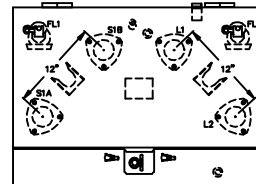
34" W x 28" D x 24" H

16" DOOR

BAYONET FUSE



FP202



34" W x 28" D x 24" H

16" DOOR

REVISION

REV.	DESCRIPTION	DATE	BY:	DATE	APPD:
1	REDRAWN	5-16-02	JCT	5-16-02	AG
2	REDRAWN	9-30-02	JCS	9-30-02	AG
3	"D" WAS 29" ON ALL & "W" WAS 34" ON 201 & 202	2-7-03	JCS	2-7-03	AG
4	"W" WAS 32 ON 201 & 202	11-21-03	JCS	11-21-03	AG
5	"D" WAS 27" ON FP 001, 201, & 202	6-15-04	JCS	6-15-04	CJD
6	REMOVED FP 001, NOW ON PAGE .5	6-2-06	JCS	6-2-06	CT



**ERMCO**

TITLE: ECO-PAD COMPOSITE  
TYPE 2

SIZE  
A

DWN. BY: JCT

DATE: 3-28-01

DRAWING NUMBER

APPD. BY: AG

DATE: 3-28-01

PAGE 1

REV. ISSUE DATE: 6-2-06

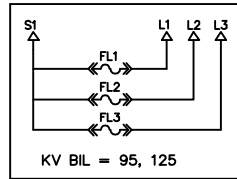
SCALE: NTS

350223-00

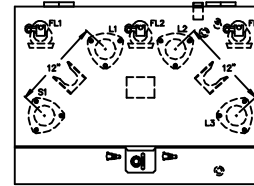
SCHEMATIC  
DIAGRAM

FRONT  
PANEL

BAYONET FUSE

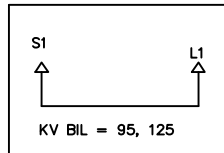


FP203

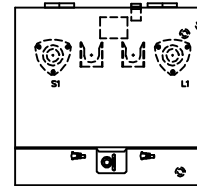


34"Wx28"Dx24"H

16" DOOR

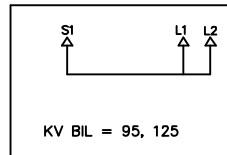


FP204

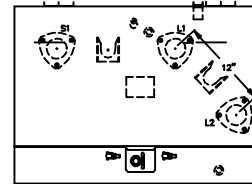


26"Wx28"Dx24"H

16" DOOR  
(POLY PAD 20" DOOR)



FP205



34"Wx28"Dx24"H

16" DOOR

REVISION

REV.	DESCRIPTION	DATE	BY:	DATE	APPD:
1	ADDED FP206 & FP207	4-11-01	JCT	4-11-01	AG
2	REDRAWN	5-16-02	JCS	5-16-02	AG
3	REDRAWN	9-30-02	JCS	9-30-02	AG
4	"D" WAS 29" ON ALL & "W" WAS 34" ON 203 & 205	2-7-03	JCS	2-7-03	AG
5	"W" WAS 32 ON 203 & 205	11-21-03	JCS	11-21-03	AG
6	"D" WAS 27" ON FP 203, 204, & 205	6-15-04	JCS	6-15-04	CJD
7	ADDED POLY PAD TO FP204	7-15-09	JCS	7-15-09	AG



**ERMCO**

TITLE: ECO-PAD COMPOSITE  
TYPE 2

SIZE  
A

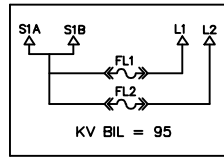
DWN. BY: JCT      DATE: 3-28-01  
APPD. BY: AG      DATE: 3-28-01  
REV. ISSUE DATE: 7-15-09      SCALE: NTS

DRAWING NUMBER  
PAGE 2  
350223-00

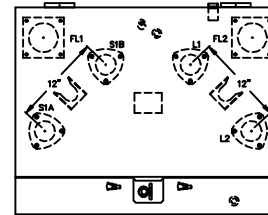
SCHEMATIC  
DIAGRAM

FRONT  
PANEL

DRYWELL FUSE



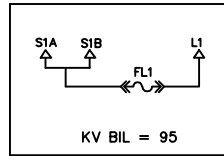
FP206



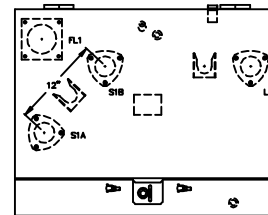
36"Wx36"Dx28"H

16" DOOR

DRYWELL FUSE



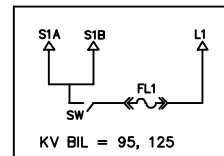
FP207



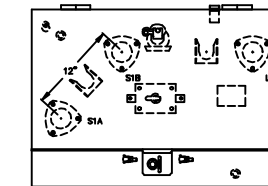
36"Wx36"Dx28"H

16" DOOR

BAYONET FUSE  
ON-OFF SW



FP208



34"Wx28"Dx24"H

16" DOOR

REVISION

REV.	DESCRIPTION	DATE	BY:	DATE	APPD:
1	ADDED FP209& FP210	02-26-02	JCS	02-26-02	AG
2	REDRAWN	5-16-02	JCS	5-16-02	AG
3	ADDED FP211	07-25-02	JCS	07-25-02	AG
4	REDRAWN	10-01-02	JCS	10-01-02	AG
5	FP208 WAS 34"Wx29"Dx24"H	2-7-03	JCS	2-7-03	AG
6	"W" WAS 32" ON FP208	11-21-03	JCS	11-21-03	AG
7	"D" WAS 39" ON FP 206 & 207 "D" WAS 27" ON FP 208	6-15-04	JCS	6-15-04	CJD



**ERMCO**

TITLE: ECO-PAD COMPOSITE  
TYPE 2

SIZE  
A

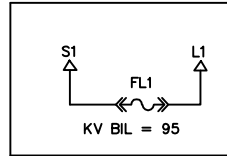
DWN. BY: JCT DATE: 4-23-01  
APPD. BY: AG DATE: 4-23-01  
REV. ISSUE DATE: 6-15-04 SCALE: NTS

DRAWING NUMBER  
PAGE 3  
350223-00

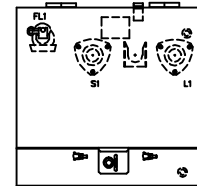
SCHEMATIC  
DIAGRAM

FRONT  
PANEL

BAYONET FUSE



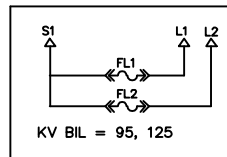
FP209



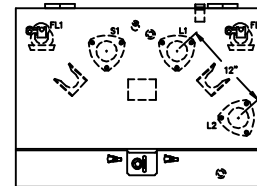
26"Wx28"Dx24"H

16" DOOR  
(W/POLY PAD 20" DOOR

BAYONET FUSE



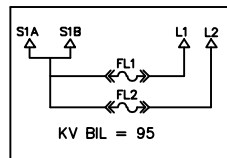
FP210



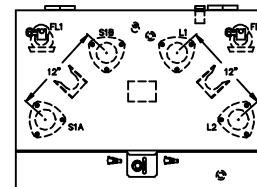
34"Wx28"Dx24"H

16" DOOR

EL BAYONET



FP211



36"Wx29"Dx26"H

16" DOOR

REVISION

REV.	DESCRIPTION	DATE	BY:	DATE	APPD:
1	REDRAWN	10-1-02	JCS	10-1-02	AG
2	FP209 WAS "D" 29" & FP210 WAS 34"W, 29"D	2-7-03	JCS		
3	"W" WAS 32" ON FP210	11-21-03	JCS	11-21-03	AG
4	"D" WAS 27" ON FP209 & 210, 36" ON 211	6-15-04	JCS	6-15-04	CJD
5	REMOVED 125BIL FROM FP211, ADD POLY PAD TO FP 209	7-15-09	JCS	7-15-09	AG



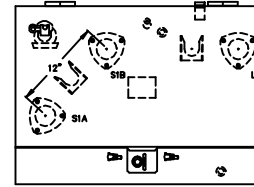
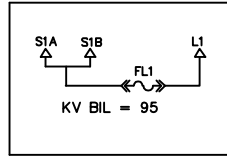
**ERMCO**

TITLE: ECO-PAD COMPOSITE TYPE 2		SIZE A
DWN. BY: JCS	DATE: 8-8-02	DRAWING NUMBER PAGE 4 350223-00
APPD. BY: AG	DATE: 8-8-02	
REV. ISSUE DATE: 7-15-09	SCALE: NTS	

SCHEMATIC  
DIAGRAM

FRONT  
PANEL

EL BAYONET

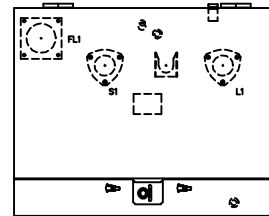
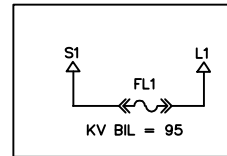


16" DOOR

FP212

36"Wx29"Dx26"H

DRYWELL FUSE

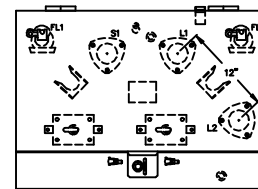
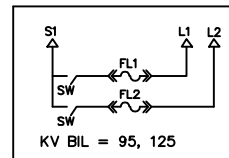


16" DOOR

FP213

34"Wx36"Dx24"H

BAYONET FUSE  
ON-OFF SW



16" DOOR

FP214

34"Wx28"Dx24"H

REVISION

REV.	DESCRIPTION	DATE	BY:	DATE	APPD.:
1	ADDED FP213	10-23-02	JCS	10-23-02	AG
2	ADDED FP214	2-25-03	JCS	2-25-03	AG
3	"W" WAS 32" ON FP 213 & 214	11-21-03	JCS	11-21-03	AG
4	"D" WAS 26" ON FP212 & 39" ON 213 & 27" ON 214	6-15-04	JCS	6-15-04	CJD
5	REMOVED KV BIL=125 FROM FP 212	1-5-05	JCS	1-5-05	CJD



**ERMCO**

TITLE: ECO-PAD COMPOSITE  
TYPE 2

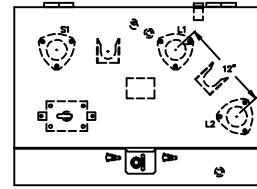
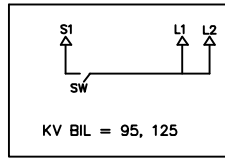
SIZE  
A

DWN. BY: JCS	DATE: 10-01-02	DRAWING NUMBER PAGE 5
APPD. BY: AG	DATE: 10-01-02	
REV. ISSUE DATE: 1-5-05	SCALE: NTS	350223-00

SCHEMATIC  
DIAGRAM

FRONT  
PANEL

ON-OFF SW

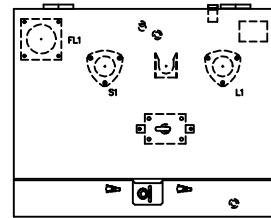
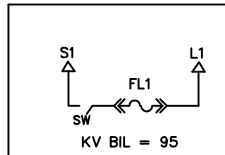


16" DOOR

FP215

34"Wx28"Dx24"H

DRYWELL FUSE  
ON-OFF SW

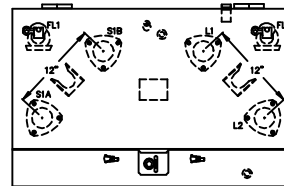
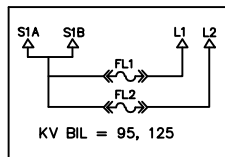


16" DOOR

FP216

34"Wx36"Dx24"H

BAYONET FUSE



16" DOOR

FP217

36"Wx28"Dx24"H



**ERMCO**

REVISION

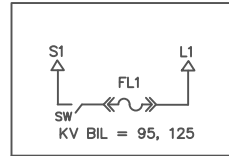
REV.	DESCRIPTION	DATE	BY:	DATE	APPD:
1	"W" WAS 32" ON FP215	11-21-03	JCS	11-21-03	AG
2	ADD FP216	12-10-03	JCS	12-10-03	AG
3	"D" WAS 39" ON FP 216	6-15-04	JCS	6-15-04	CJD
4	ADD FP217	7-13-04	JCS	7-13-04	CJD

TITLE: ECO-PAD COMPOSITE TYPE 2		SIZE A
DWN. BY: JCS	DATE: 7-29-03	DRAWING NUMBER PAGE 6 350223-00
APPD. BY: AG	DATE: 7-29-03	
REV. ISSUE DATE: 7-13-04	SCALE: NTS	

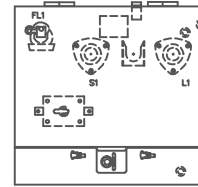
SCHEMATIC  
DIAGRAM

FRONT  
PANEL

BAYONET FUSE  
ON-OFF SW



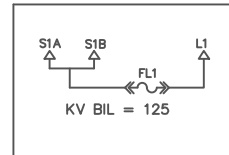
FP218



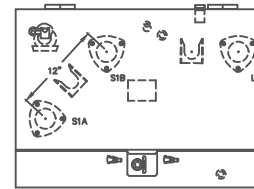
26"Wx29"Dx24"H

16" DOOR  
(W/POLY PAD 20" DOOR)

EL BAYONET



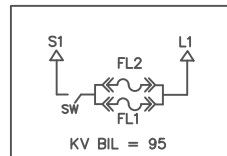
FP222



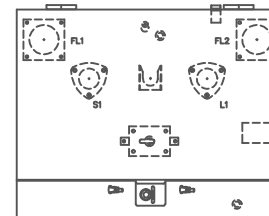
36"Wx36"Dx26"H

16" DOOR

DRYWELL PARALLEL FUSE  
ON-OFF SW



FP223



36"Wx36"Dx28"H

16" DOOR

REVISION

REV.	DESCRIPTION	DATE	BY:	DATE	APPD:
1	ADDED FP218	7-19-05	JCS	7-19-05	CJD
2	ADDED FP225	8-29-05	JCS	8-29-05	CJD
3	removed FP225 & added fp223	2-9-06	JCS	2-9-06	CJD
4	ADDED POLY... TO 218, BIL ON 222 WAS 125	7-16-09	JCS	7-16-09	AG
5	REMOVED 95 BIL & ADDED 125 TO FP222	10-20-10	JCS	10-20-10	BL



**ERMCO**

TITLE: ECO-PAD COMPOSITE  
TYPE 2

SIZE  
A

DWN. BY: JCS

DATE: 1-5-05

DRAWING NUMBER

APPD. BY: CJD

DATE: 1-5-05

PAGE 7

REV. ISSUE DATE: 10-20-10

SCALE: NTS

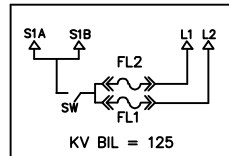
350223-00



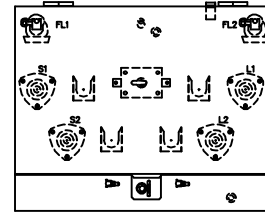
SCHEMATIC  
DIAGRAM

FRONT  
PANEL

BAYONET FUSE  
ON-OFF SW



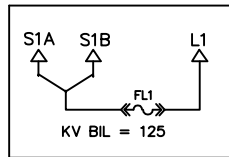
FP224



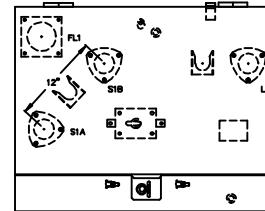
36"Wx32"Dx28"H

16" DOOR

DRYWELL  
V-BLADE SW



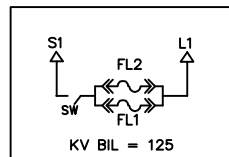
FP225



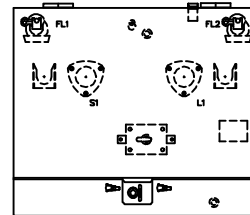
36"Wx41"Dx28"H

16" DOOR

BAYONET FUSE  
ON-OFF SW



FP226



34"Wx29"Dx24"H

16" DOOR

REVISION

REV.	DESCRIPTION	DATE	BY:	DATE	APPD:
1	ADDED FP224 & FP226	4-17-06	JCS	4-17-06	CD
2	CHD FP225 FROM T-BLADE	11-27-06	JCS	11-27-06	BL
3					
4					



**ERMCO**

TITLE: ECO-PAD COMPOSITE  
TYPE 2

SIZE  
A

DWN. BY: JCS

DATE: 8-29-05

DRAWING NUMBER

APPD. BY: CJD

DATE: 8-26-05

PAGE 8

REV. ISSUE DATE: 11-27-06

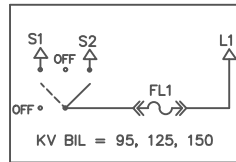
SCALE: NTS

350223-00

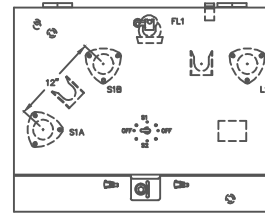
SCHEMATIC  
DIAGRAM

FRONT  
PANEL

BAYONET FUSE  
4 POSITION SWITCH



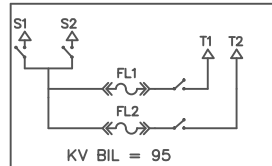
FP227



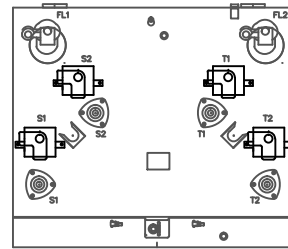
34"Wx28"Dx24"H

16" DOOR

EL BAYONET  
ON-OFF SWITCH



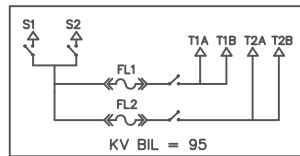
FP228



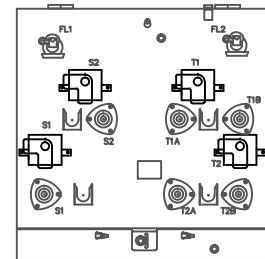
36"Wx30"Dx32"H

16" DOOR

BAYONET FUSE  
ON-OFF SWITCH  
(NO EMOSS ON BU)



FP229



36"Wx30"Dx36"H

16" DOOR

REVISION

REV.	DESCRIPTION	DATE	BY:	DATE	APPD:
1	ADDED ITEM 230	4-16-10	JCS	4-16-10	JDP
2	ADDED ITEM 228 & 229, RM'D 230	9-22-10	JCS	9-22-10	JDP
3					
4					



**ERMCO**

TITLE: ECO-PAD COMPOSITE  
TYPE 2

SIZE  
A

DWN. BY: JCS

DATE: 6-22-09

DRAWING NUMBER

APPD. BY: TJ

DATE: 6-22-09

PAGE 9

REV. ISSUE DATE: 9-22-10

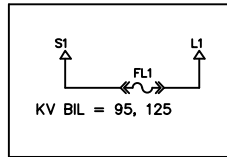
SCALE: NTS

350223-00

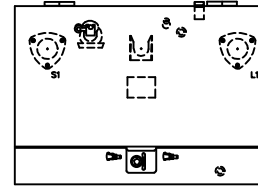
SCHEMATIC  
DIAGRAM

FRONT  
PANEL

BAYONET FUSE



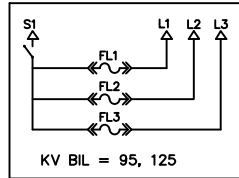
FP230



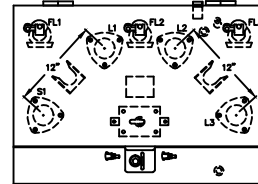
34"Wx28"Dx24"H

16" DOOR

BAYONET FUSE  
ON OFF SWITCH



FP233



34"Wx28"Dx24"H

16" DOOR

REVISION

REV.	DESCRIPTION	DATE	BY:	DATE	APPD:
1	ADDED FP233	3-2-11	JCS		
2					
3					
4					



**ERMCO**

TITLE: ECO-PAD COMPOSITE  
TYPE 2

SIZE  
A

DWN. BY: JCS	DATE: 9-22-10	DRAWING NUMBER <b>PAGE 10</b> 350223-00
APPD. BY: JDP	DATE: 9-22-10	
REV. ISSUE DATE: 3-2-11	SCALE: NTS	