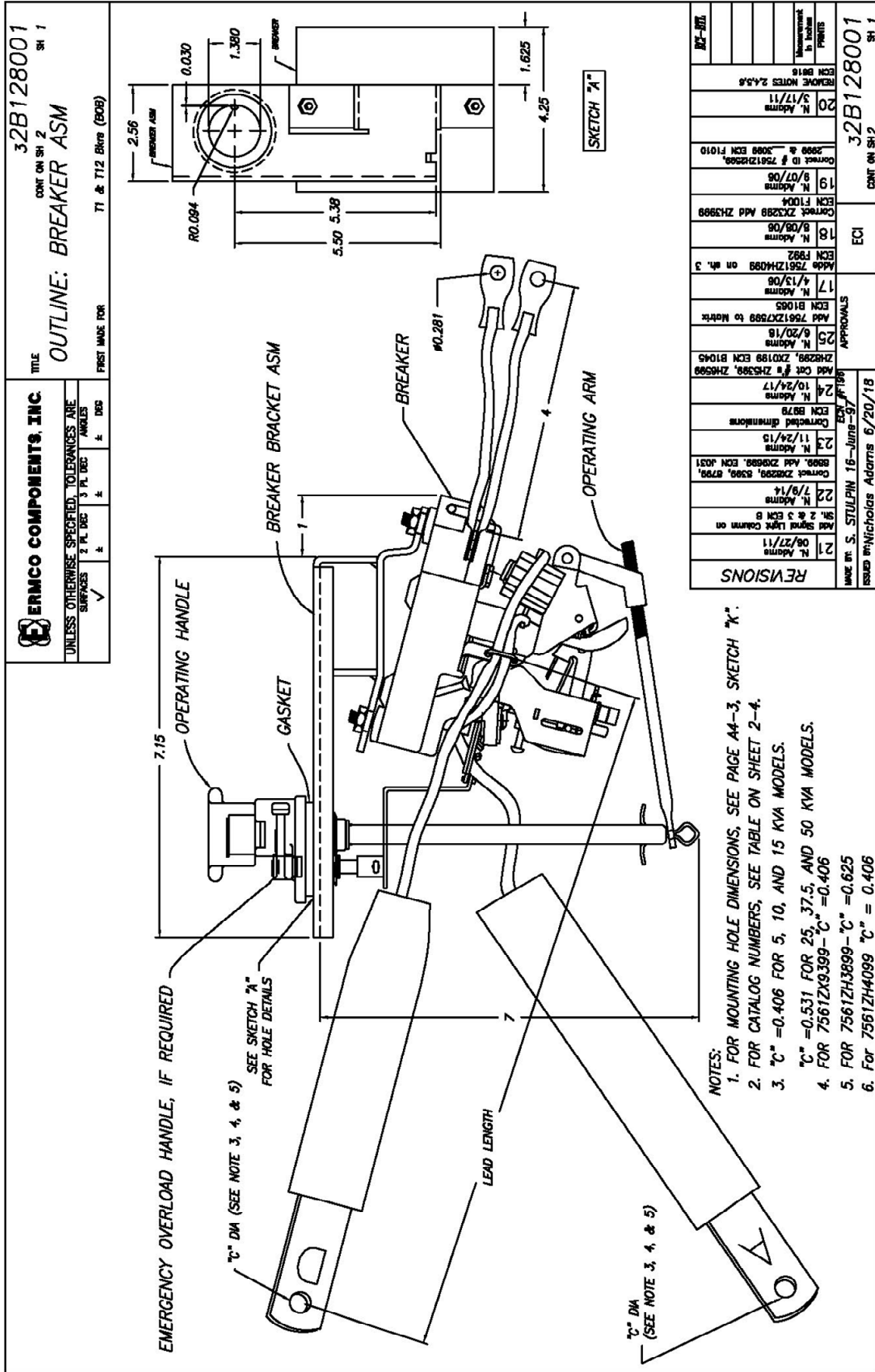




SMALL BREAKER ON BRACKET INTERNAL MOUNT

7-7F
A1-18
06/18

SMALL BREAKER ON BRACKET INTERNAL MOUNT





SMALL BREAKER ON BRACKET INTERNAL MOUNT

ECI
7-7F
A1-18A/B/C
06/18

CAT #	DESCRIPTION	VOLTAGE	ID	TRIP TEMP	LEAD "A"	LENGTH "D"	SIGNAL LIGHT EMERGENCY	SIGNAL LIGHT BULB ASM	CURVE GES6301A
7561ZH2099	10 KVA EC&S	120/240	2501K182G16	110	13	13	Y	Y	10
7561ZH2399	7.5 KVA EC&S	120/240	2501K182G59	110	13	13	Y	Y	7.5
7561ZH2499	37.5 KVA EC&S	120/240	2501K185G04	160	13	13	Y	Y	37.5
7561ZH2599	50 KVA EC&S	120/240	2501K185G05	160	8	13	Y	N	50
7561ZH2699	10 KVA EC&S	120/240	2501K182G03	150	8	15	Y	N	10
7561ZH2799	15 KVA EC&S	120/240	2501K182G04	153	8	15	Y	N	15
7561ZH2899	5 KVA EC&S	120/240	2501K182G64	120	13	13	Y	Y	5
7561ZH2999	7.5 KVA EC&S	120/240	2501K182G02	145	8	13	Y	N	7.5
7561ZH3099	50 KVA	120/240	2501K213G45	130	8	17	N	N	50
7561ZH3199	7.5 KVA	120/240	2501K212G09	110	13	13	N	N	7.5
7561ZH3299	10 KVA	120/240	2501K212G08	110	13	13	N	N	10
7561ZH3399	37.5 KVA	120/240	2501K213G09	110	13	13	N	N	37.5
7561ZH3499	10 KVA	120/240	2501K212G10	110	13	13	N	N	10
7561ZH3599	50 KVA	120/240	2501K213G09	110	8	17	N	N	50
7561ZH3699	25 KVA	120/240	2501K212G11	120	13	13	N	N	25
7561ZH3899	50 KVA	120/240	2501K185G51	160	9	15	Y	N	50
7561ZH3999	15 KVA EC&S	120/240	2501K182G69	110	13	13	Y	Y	15
7561ZH4099	25 KVA EC&S	120/240	2501K185G06	160	8	15	Y	N	25
7561ZH4899	37.5 KVA	120/240	2501K185G53	160	13	13	Y	N	37.5
7561ZH4999	50 KVA	120/240	2501K185G54	160	13	13	Y	N	50
7561ZH5299	50 KVA	120/240	2501K185G02	160	6T	6T	Y	Y	50
7561ZH5399	25 KVA	120/240	2501K212G19	110	13	13	N	N	25
7561ZH6099	5 KVA	120/240	2501K182G01	145	6	6	Y	Y	5
7561ZH6199	10 KVA	120/240	2501K182G03	150	6	6	Y	Y	10
7561ZH6299	25 KVA	120/240	2501K182G05	160	6	6	Y	Y	25
7561ZH6399	50 KVA	120/240	2501K185G05	160	6	6	Y	Y	50
7561ZH6499	37.5 KVA	120/240	2501K185G04	160	6	6	Y	Y	37.5
7561ZH6599	37.5 KVA	120/240	2501K185G18	110	8	16	Y	Y	37.5
7561ZH8099	25 KVA	120/240	2501K182G05	160	13	13	Y	N	25
7561ZH8199	25 KVA	120/240	2501K182G57	110	8	15	Y	N	25
7561ZH8299	25 KVA MG	120/240	2501K185G08	110	13	13	Y	Y	25
7561ZX0199	5 KVA	120/240	2501K182G01	145	12	12	Y	Y	5
7561ZX0299	25KVA EC&S	120/240	2501K182G57	110	13	13	Y	Y	25
7561ZX0399	25 KVA	120/240	2501K182G39	140	6T	6T	Y	Y	25
7561ZX0499	37.5 KVA	120/240	2501K185G15	148	6T	6T	Y	Y	37.5
7561ZX0599	10 KVA	120/240	2501K182G03	150	12	9	Y	Y	10
7561ZX0699	15 KVA	120/240	2501K182G04	153	12	9	Y	Y	15
7561ZX0799	25 KVA	120/240	2501K182G05	160	12	9	Y	Y	25
7561ZX0899	37.5 KVA	120/240	2501K185G52	148	13	13	Y	Y	37.5
7561ZX0999	50 KVA	120/240	2501K185G17	130	6T	6T	Y	Y	50
7561ZX1099	37.5 KVA EC&S	120/240	2501K185G18	110	13	13	Y	Y	37.5



SMALL BREAKER ON BRACKET INTERNAL MOUNT

ECI
7-7F
A1-18A/B/C
06/18

CAT #	DESCRIPTION	VOLTAGE	ID	TRIP TEMP	LEAD "A"	LENGTH "D"	SIGNAL LIGHT EMERGENCY	SIGNAL LIGHT BULB ASM	CURVE GES6301A
7561ZX1199	50 KVA EC&S	120/240	2501K185G19	110	8	8	Y	Y	50
7561ZX1299	5 KVA EC&S	120/240	2501K182G44	110	13	13	Y	Y	5
7561ZX1399	10 KVA EC&S	120/240	2501K182G08	130	13	13	Y	Y	10
7561ZX1499	25 KVA EC&S	120/240	2501K182G54	130	13	13	Y	Y	25
7561ZX1799	15 KVA EC&S	120/240	2501K182G23	130	13	13	Y	Y	15
7561ZX1899	50 KVA EC&S	120/240	2501K185G19	110	8	8	Y	Y	50
7561ZX1999	25 KVA EC&S	120/240	2501K182G55	120	13	13	Y	Y	25
7561ZX2099	15 KVA EC&S	120/240	2501K182G04	153	13	13	Y	Y	15
7561ZX2199	15 KVA EC&S	120/240	2501K182G38	120	13	13	Y	Y	15
7561ZX2299	5 KVA	120/240	2501K182G15	110	6T	6T	Y	Y	5
7561ZX2399	5 KVA EC&S	120/240	2501K182G58	150	13	13	Y	Y	5
7561ZX2499	10 KVA EC&S	120/240	2501K182G03	150	13	13	Y	Y	10
7561ZX2599	15 KVA EC&S	120/240	2501K182G04	153	13	13	Y	Y	15
7561ZX2699	25KVA EC&S	120/240	2501K182G05	160	13	13	V	Y	25
7561ZX2899	25 KVA	120/240	2501K182G12	160	6T	6T	Y	Y	25
7561ZX2999	37.5 KVA EC&S	120/240	2501K185G22	140	8	8	Y	Y	37.5
7561ZX3099	50 KVA EC&S	120/240	2501K185G13	120	13	13	Y	Y	50
7561ZX3199	10 KVA EC&S	120/240	2501K182G13	120	13	13	Y	Y	10
7561ZX3299	10 KVA EC&S	120/240	2501K182G45	110	13	13	Y	Y	10
7561ZX3399	15 KVA EC&S	120/240	2501K182G51	140	13	13	Y	Y	15
7561ZX3499	37.5 KVA EC&S	120/240	2501K185G24	120	13	13	Y	Y	37.5
7561ZX3599	50 KVA EC&S	120/240	2501K185G23	130	13	13	Y	Y	50
7561ZX5299	50 KVA EC&S	120/240	2501K185G46	110	13	13	Y	Y	50
7561ZX5399	37.5 KVA EC&S	120/240	2501K185G47	130	13	13	Y	Y	37.5
7561ZX5599	50 KVA EC&S	120/240	2501K185G51	160	13	13	Y	Y	50
7561ZX5699	37.5 KVA	120/240	2501K185G01	160	6T	6T	Y	Y	37.5
7561ZX5799	50 KVA	120/240	2501K213G02	160	6T	6T	N	N	50
7561ZX5899	15 KVA	120/240	2501K212G03	150	6	6	N	N	15
7561ZX5999	50 KVA	120/240	2501K185G05	160	13	13	Y	N	50
7561ZX6099	15 KVA	120/240	2501K212G04	153	13	13	N	N	50
7561ZX6199	25 KVA	120/240	2501K182G05	160	13	13	Y	N	25
7561ZX6299	15 KVA	120/240	2501K182G03	150	13	13	Y	N	15
7561ZX6399	37.5 KVA EC&S	120/240	2501K185G04	160	13	13	Y	Y	37.5
7561ZX6499	15 KVA	120/240	2501K182G04	153	13	13	Y	N	15
7561ZX6599	37.5 KVA	120/240	2501K185G04	160	13	13	Y	N	37.5
7561ZX6699	50 KVA	120/240	2501K185G05	160	13	13	Y	N	50
7561ZX6799	15 KVA	120/240	2501K182G45	110	8	14	Y	Y	15
7561ZX6899	15 KVA	120/240	2501K182G38	120	8	14	Y	Y	15
7561ZX6999	25 KVA	120/240	2501K182G72	130	8	15	Y	Y	25
7561ZX7099	50 KVA	120/240	2501K185G23	130	8	16	Y	Y	50
7561ZX7199	25 KVA	120/240	2501K182G55	120	8	15	Y	Y	25



SMALL BREAKER ON BRACKET INTERNAL MOUNT

ECI
7-7F
A1-18A/B/C
06/18

CAT #	DESCRIPTION	VOLTAGE	ID	TRIP TEMP	LEAD "A"	LENGTH "D"	SIGNAL LIGHT EMERGENCY	SIGNAL LIGHT BULB ASM	CURVE GES6301A
7561ZX7299	10 KVA E&S	120/240	2501K182G03	150	13	13	Y	Y	10
7561ZX7399	10 KVA	120/240	2501K212G03	150	13	13	N	N	10
7561ZX7499	25 KVA	120/240	2501K182G57	110	15	15	Y	Y	25
7561ZX7599	50 KVA	120/240	2501K213G16	160	6	6	N	N	50
7561ZX7699	25 KVA EC&S	120/240	2501K182G05	160	13	13	Y	Y	25
7561ZX7799	25 KVA	120/240	2501K212G05	160	13	13	N	N	25
7561ZX7899	25 KVA	240/480	2501K182G70	140	8	15	Y	Y	10
7561ZX7999	37.5 KVA	240/480	2501K182G04	153	8	16	Y	Y	15
7561ZX8099	50 KVA	240/480	2501K185G55	148	8	17	Y	Y	25
7561ZX8199	50 KVA	120/240	2501K213G05	160	13	13	N	N	50
7561ZX8299	10 KVA	120/240	2501K182G45	110	8	13	Y	Y	10
7561ZX8399	15 KVA	120/240	2501G182G69	110	8	13	Y	Y	15
7561ZX8499	10 KVA	120/240	2501K212G33	120	8	13	N	N	10
7561ZX8599	25 KVA	120/240	2501K212G34	120	8	13	N	N	25
7561ZX8699	50 KVA	120/240	2501K213G45	130	8	15	N	N	50
7561ZX8799	25 KVA	120/240	2501K182G57	110	8	14	Y	Y	25
7561ZX8899	37.5 KVA	120/240	2501K185G18	110	8	15	Y	Y	37.5
7561ZX8999	5 KVA EC&S	120/240	2501K182G44	110	13	13	Y	Y	5
7561ZX9199	50 KVA EC&S	120/240	2501K185G23	130	8	17	Y	Y	50
7561ZX9299	50 KVA EC&S	120/240	2501K185G51	160	8	15	Y	N	50
7561ZX9399	25 KVA EC&S	120/240	2501K182G05	160	8	15	Y	N	25
7561ZX9499	7.5 KVA EC&S	120/240	2501K182G59	120	13	13	Y	Y	7.5
7561ZX9599	37.5 KVA EC&S	120/240	2501K185G04	160	8	15	Y	N	37.5
7561ZX9699	15 KVA	120/240	2501K182G69	110	8	15	Y	Y	15
7561ZX9899	25 KVA	120/240	2501K182G57	110	8	15	Y	Y	25

REVISION

22) N. Adams 7/09/14 Correct ZX8299, ZX8399, ZX8799, ZX8899, ZX9899. Add ZX9699 ECN J031	23) N. Adams 11/24/15 Correct dim. On sh. 1 ECN B979	24) N. Adams 10/24/17 Add Cat #'s ZH5399, ZH6599, ZH8299, ZX0199 ECN: B1045	25) N. Adams 6/20/18 Add 7561ZX7599 ECN: B1065
---	--	--	---

MADE BY: R. GILLAND 9-OCT-02	APPROVAL	ECI	DRAWING NO. 3 2B128001
ISSUED BY: Nicholas Adams 6/20/18			

FOR MORE INFORMATION VISIT ermco-eci.com

ERMCO COMPONENTS, INC | 1607 Industrial Road | Greenville, TN 37745 | 877-267-1855