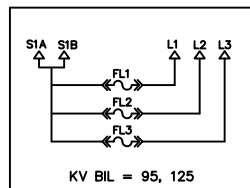


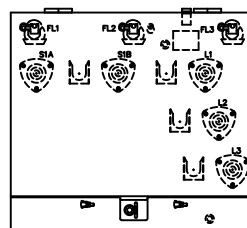
SCHEMATIC
DIAGRAM

FRONT
PANEL

BAYONET FUSE



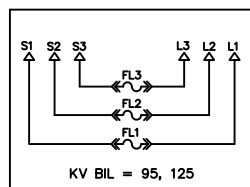
FP101



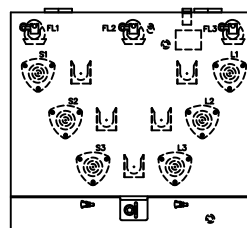
16" DOOR

36"Wx29"Dx32"H

BAYONET FUSE



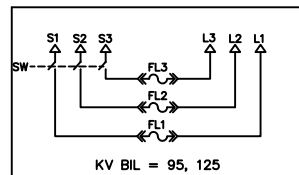
FP102



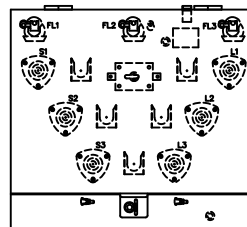
20" DOOR

36"Wx33"Dx32"H

BAYONET FUSE
ON-OFF SW



FP103



20" DOOR

36"Wx40"Dx32"H

REVISION

REV.	DESCRIPTION	DATE	BY:	DATE	APPD.:
1	REDRAWN	5-16-02	JCS	5-16-02	AG
2	REDRAWN	10-1-02	JCS	10-1-02	AG
3	"D" WAS 29" FP 101 & 33" FP 102 "W" WAS 36" FP 102 & 103	2-7-03	JCS	2-7-03	AG
4	"W" WAS 32" FP 102 & 103	11-24-03	JCS	11-24-03	AG
5	"D" WAS 27" FP 101, 31" FP 102 & 33" FP 103	6-14-04	JCS	6-14-04	CJD
6	REVISED FP101 DEPTH TO BE 29"	10-2-12	JJB	10-2-12	JBV



ERMCO

TITLE: ECO-PAD COMPOSITE
TYPE 1

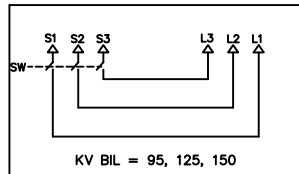
SIZE
A

DWN. BY: JCT	DATE: 3-28-01	DRAWING NUMBER PAGE 1 350221-99
APPD. BY: AG	DATE: 3-28-01	
REV. ISSUE DATE: 10-2-12	SCALE: NTS	

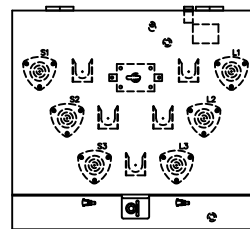
SCHEMATIC
DIAGRAM

FRONT
PANEL

ON-OFF SW



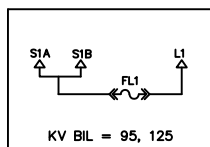
FP104



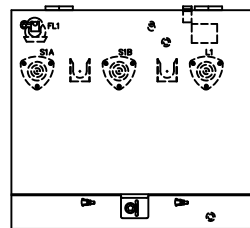
20" DOOR

36"Wx40"Dx32"H

BAYONET FUSE



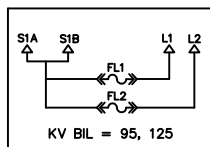
FP105



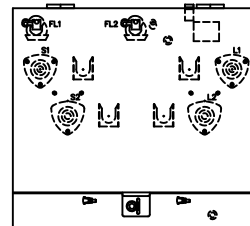
16" DOOR

36"Wx29"Dx32"H

BAYONET FUSE



FP106



16" DOOR

36"Wx29"Dx32"H

REVISION

REV.	DESCRIPTION	DATE	BY:	DATE	APPD:
1	ADDED FP107 & FP 108	11-9-01	JCT	11-9-01	AG
2	REDRAWN	5-16-02	JCS	5-16-02	AG
3	REDRAWN	10-1-02	JCS	10-1-02	AG
4	"W" WAS 36" ALL & "D" WAS 29" 105 & 106	2-7-03	JCS	2-7-03	AG
5	"W" WAS 32" ON ALL	11-24-03	JCS	11-24-03	AG
6	"D" WAS 33" FP104, & 27" ON FP 105 & 106	6-14-04	JCS	6-14-04	CJD
7	REVISED WIDTH TO BE 36" FOR FP105 & 106	10-2-12	JJB	10-2-12	JBV



ERMCO

TITLE: ECO-PAD COMPOSITE
TYPE 1

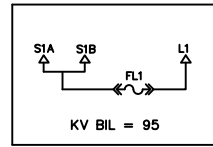
SIZE
A

DWN. BY: JCT	DATE: 3-28-01	DRAWING NUMBER PAGE 2 350221-99
APPD. BY: AG	DATE: 3-28-01	
REV. ISSUE DATE: 10-2-12	SCALE: NTS	

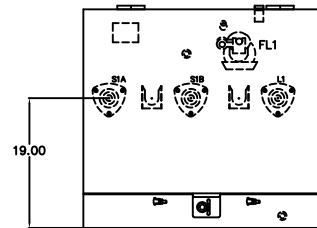
SCHEMATIC
DIAGRAM

FRONT
PANEL

EL BAYONET



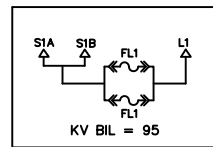
FP107



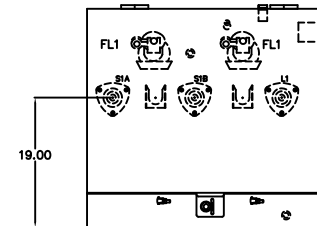
36" W x 29" D x 32" H

16" DOOR

EL BAYONET



FP109



34" W x 36" D x 32" H

16" DOOR

REVISION

REV.	DESCRIPTION	DATE	BY:	DATE	APPD:
1	REDRAWN	5-16-02	JCS	5-16-02	AG
2	REDRAWN	10-1-02	JCS	10-1-02	AG
3	FP107 & FP109 "D" WAS 41"	12-11-02	JCS	12-11-02	AG
4	REMOVED FP108	12-19-02	JCS	12-19-02	AG
5	"W" WAS 36", 107 D WAS 29", 109 D WAS 36"	2-7-03	JCS	2-7-03	AG
6	"W" WAS 32"	11-24-03	JCS	11-24-03	AG
7	"D" WAS 27" ON FP 107 & 109	6-14-04	JCS	6-14-04	CJD
8	REMOVED 125 BIL FROM FP109	7-15-09	JCS	7-15-09	AG
9	REVISED WIDTH TO BE 36" FOR FP107	10-2-12	JJB	10-2-12	JBV



ERMCO

TITLE: ECO-PAD COMPOSITE
TYPE 1

SIZE
A

DWN. BY: JCS DATE: 3-5-02 DRAWING NUMBER

APPD. BY: AG DATE: 3-5-02

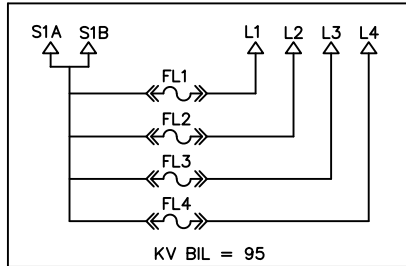
REV. ISSUE DATE: 10-2-12 SCALE: NTS

PAGE 3
350221-99

SCHEMATIC
DIAGRAM

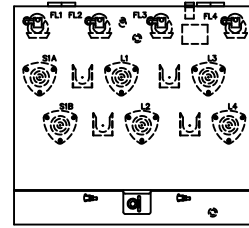
FRONT
PANEL

BAYONET FUSE



KV BIL = 95

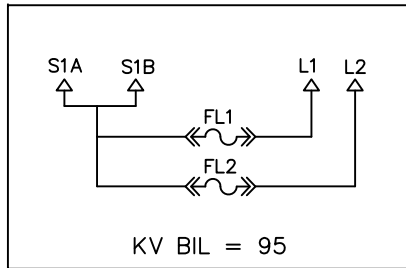
FP110



36"Wx30"Dx32"H

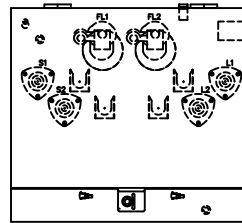
16" DOOR

EL BAYONET FUSE



KV BIL = 95

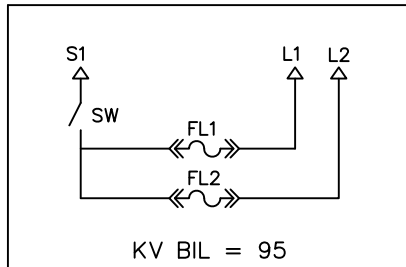
FP111



36"Wx30"Dx32"H

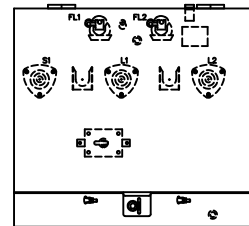
16" DOOR

BAYONET FUSE



KV BIL = 95

FP112



34"Wx29"Dx32"H

16" DOOR

REV.	REVISION DESCRIPTION	DATE	BY:	DATE	APPD:
1	FP110 WAS 36"Wx29"Dx32"H	02-07-03	JCS	2-7-03	AG
2	FP110 WAS 32"Wx29"Dx32"H, ADD FP111 & ADD FP112	06-26-03	JCS	6-26-03	JCS
3	FP112 WAS 32" W	11-24-03	JCS	11-24-03	AG
4	"D" WAS 27" ON FP 110 & 30" ON FP 111 & FP 112	6-15-04	JCS	6-15-04	CJD
5	REV DEPTH TO 30" FOR FP110 & 111	10-11-12	JJB	10-11-12	JBV



ERMCO

TITLE: ECO-PAD COMPOSITE
TYPE 1

SIZE
A

DWN. BY: JCS

DATE: 12-13-02

DRAWING NUMBER

APPD. BY: AG

DATE: 12-13-02

REV. ISSUE DATE: 10-11-12

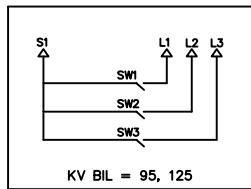
SCALE: NTS

PAGE 4
350221-99

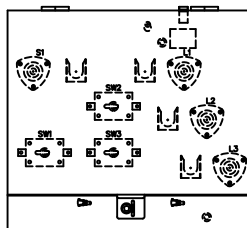
SCHEMATIC
DIAGRAM

FRONT
PANEL

ON-OFF SW



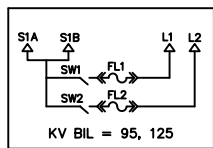
FP113



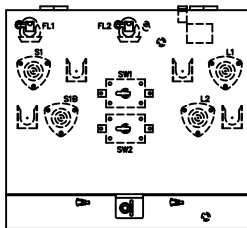
36" W x 30" D x 32" H

16" DOOR

BAYONET FUSE
ON-OFF SW



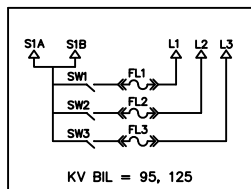
FP114



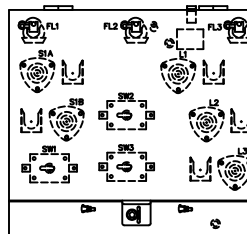
36" W x 29" D x 32" H

16" DOOR

BAYONET FUSE
ON-OFF SW



FP115



36" W x 29" D x 32" H

16" DOOR

REVISION

REV.	DESCRIPTION	DATE	BY:	DATE	APPD:
1	ADDED FP114 & 115	01-09-04	JCS	01-09-04	AG
2	"D" WAS 30" ON FP 113 & 27" ON FP 114 & FP 115	6-15-04	JCS	6-15-04	CJD
3	FP115 ON-OFF SW WERE ALL 3 DOWN CENTER	6-18-04	JCS	6-18-04	CJD
4	FP113 WAS ALL SW IN ROW	03-23-05	JCS	03-23-05	CJD
5	FP114 WAS 34" W	03-30-10	JCS	03-30-10	JDP
6	REVISED DEPTH TO BE 30" FOR FP113	10-2-12	JJB	10-2-12	JBV



ERMCO

TITLE: ECO-PAD COMPOSITE
TYPE 1

SIZE
A

DWN. BY: JCS

DATE: 7-15-03

DRAWING NUMBER

APPD. BY: AG

DATE: 7-15-03

PAGE 5

REV. ISSUE DATE: 10-2-12

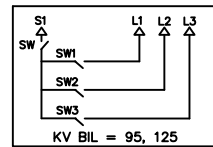
SCALE: NTS

350221-99

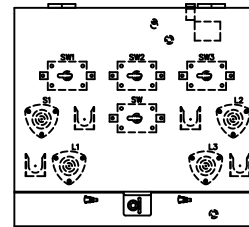
SCHEMATIC
DIAGRAM

FRONT
PANEL

ON-OFF SW



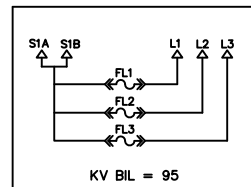
FP116



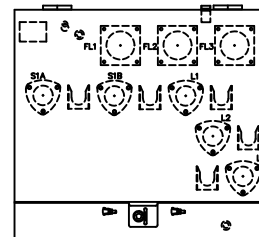
36" W x 29" D x 32" H

16" DOOR

DRY-WELL CANISTER



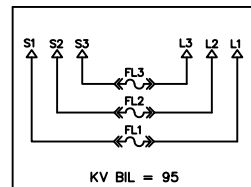
FP117



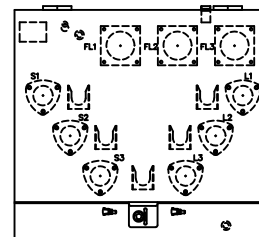
36" W x 36" D x 32" H

16" DOOR

DRY-WELL CANISTER



FP118



36" W x 40" D x 32" H

20" DOOR

REVISION

REV.	DESCRIPTION	DATE	BY:	DATE	APPD.:
1	ADDED FP117	1-26-04	JCS	1-26-04	AG
2	ADDED FP118	3-3-04	JCS	3-3-04	CJD
3	SW WERE ALL DOWN CENTER FP116	5-21-04	JCS	5-21-04	CJD
4	"D" WAS 27" ON FP 116 & 38" ON FP 117 & FP 118	6-15-04	JCS	6-15-04	CJD
5	FP 116 D WAS 29" DOOR WAS 16"	12-15-05	JCS	12-15-05	CJD
6	FP 116 D WAS 33" DOOR WAS 20"	12-20-05	JCS	12-20-05	CJD
7	FP 118 D WAS 36" DOOR WAS 16" KV BIL WAS 95, 125	11-15-07	JCS	11-15-07	TJ
8	REVISED DEPTH FOR FP116 & 118	10-2-12	JJB	10-2-12	JBV



ERMCO

TITLE: ECO-PAD COMPOSITE
TYPE 1

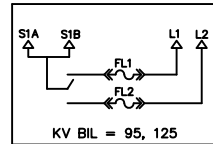
SIZE
A

DWN. BY: JCS	DATE: 1-16-04	DRAWING NUMBER PAGE 6 350221-99
APPD. BY: AG	DATE: 1-16-04	
REV. ISSUE DATE: 10-2-12	SCALE: NTS	

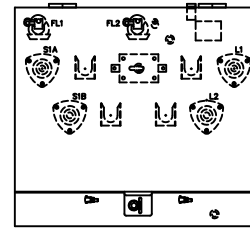
SCHMATIC
DIAGRAM

FRONT
PANEL

BAYONET FUSE
3 POS. SW



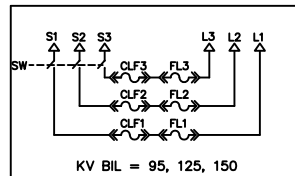
FP119



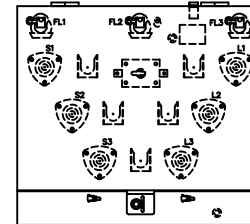
34"Wx29"Dx32"H

16" DOOR

BAYONET FUSE
ON-OFF SW
3 CLF



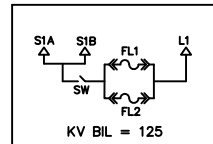
FP120



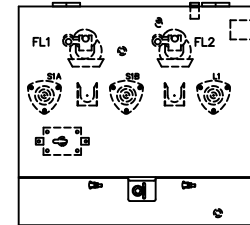
36"Wx40"Dx32"H

20" DOOR

EL BAYONET
SWITCH



FP121



36"Wx36"Dx38"H

18" DOOR
11" TALL SILL

REVISION

REV.	DESCRIPTION	DATE	BY:	DATE	APPD:
1	ADDED FP120	5-26-04	JCS	5-26-04	CJD
2	"D" WAS 27" ON FP119 & 33" ON 120	6-15-04	JCS	6-15-04	CJD
3	ADDED FP121	11-15-04	JCS	11-15-04	CJD
4	FP121 SCHEMATIC DIDN'T SHOW SW	12-13-04	JCS	12-13-04	CJD
5	REMOVED 125 BIL FROM 121	7-15-09	JCS	7-15-09	AG
6	FP121 PARALLEL FUSING WAS FL1 & FL1	4-26-10	JCS	4-26-10	JDP
7	RE'D 95 BIL & ADDED 125 BACK TO 121	10-20-10	JCS	10-20-10	BL
8	REVISED FP121 DEPTH TO BE 36"	10-10-12	JJB	10-10-12	JBV



ERMCO

TITLE: ECO-PAD COMPOSITE
TYPE 1

SIZE
A

DWN. BY: JCS DATE: 4-19-04

DRAWING NUMBER

APPD. BY: CJD DATE: 4-19-04

PAGE 7

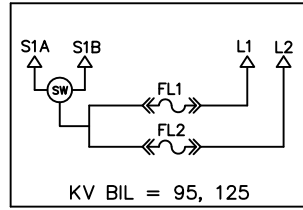
REV. ISSUE DATE: 10-10-12 SCALE: NTS

350221-99

SCHEMATIC
DIAGRAM

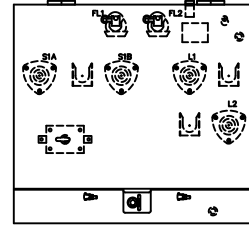
FRONT
PANEL

BAYONET FUSE
(1-4 POSITION SW)



KV BIL = 95, 125

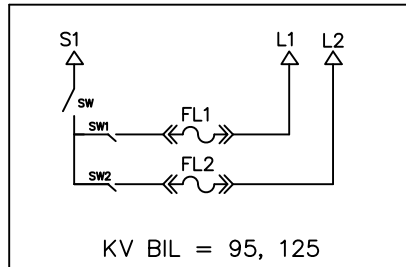
FP123



36" W x 30" D x 32" H

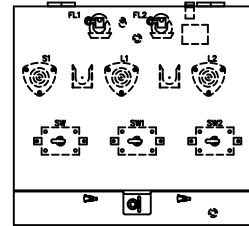
16" DOOR

BAYONET FUSE
ON-OFF SW



KV BIL = 95, 125

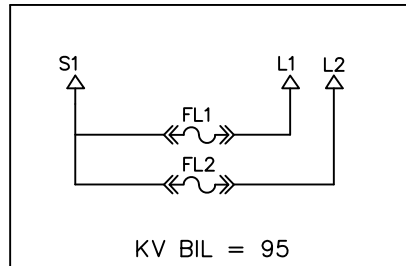
FP124



36" W x 29" D x 32" H

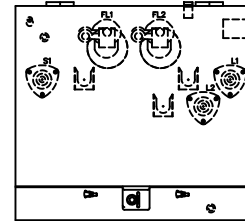
16" DOOR

EL BAYONET FUSE



KV BIL = 95

FP125



36" W x 30" D x 32" H

16" DOOR

REVISION

REV.	DATE:	BY:	DATE:	APPD:
1	ADDED FP 124	1-10-07	JCS	1-10-07 BL
2	ADDED FP 125	7-20-07	JCS	7-20-07 BL
3	REVISED FP125 DEPTH TO BE 30"	10-10-12	JJB	10-10-12 JBV
4	REVISED FP123 TO 1-4 POSITION SW	1-18-13	JJB	1-18-13 JBV



ERMCO

TITLE: ECO-PAD COMPOSITE
TYPE 1

SIZE
A

DWN. BY: JCS

DATE: 8-29-05

DRAWING NUMBER

APPD. BY: CJD

DATE: 8-29-05

PAGE 8

REV. ISSUE DATE: 1-18-13

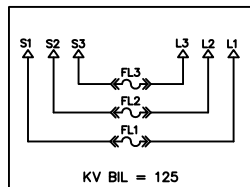
SCALE: NTS

350221-99

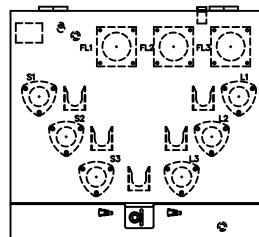
SCHEMATIC
DIAGRAM

FRONT
PANEL

DRY-WELL CANISTER

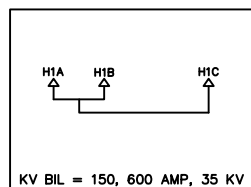


FP126

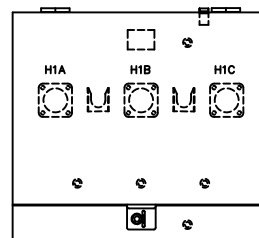


36" W x 45" D x 32" H

20" DOOR



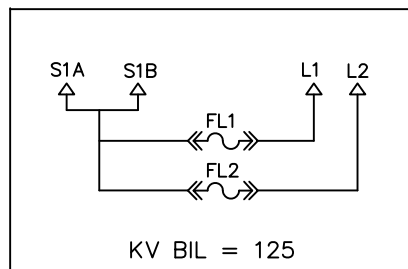
FP129



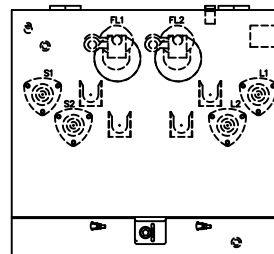
34" W x 32" D x 32" H

19" DOOR

EL BAYONET FUSE



FP131



36" W x 36" D x 32" H

16" DOOR

REVISION

REV.	DESCRIPTION	DATE	BY:	DATE	APPD.:
1	ADDED FP??? & FP???	05-07-09	JCS	05-07-09	JCS
2	REVISED FP126 DEPTH TO BE 45"	10-10-12	JJB	10-10-12	JBV
3	REMOVED (2) UNKNOWN ECO PADS	2-12-14	JJB	2-12-14	JBV
4	ADDED FP129 & 131 (WERE ON PG 10)	3-9-15	JCM	3-9-15	JBV
5					
6					
7					
8					
9					



ERMCO

TITLE: ECO-PAD COMPOSITE
TYPE 1

SIZE
A

DWN. BY: JCS

DATE: 11-15-07

DRAWING NUMBER

APPD. BY: TJ

DATE: 11-15-07

PAGE 9

REV. ISSUE DATE: 3-9-15

SCALE: NTS

350221-99