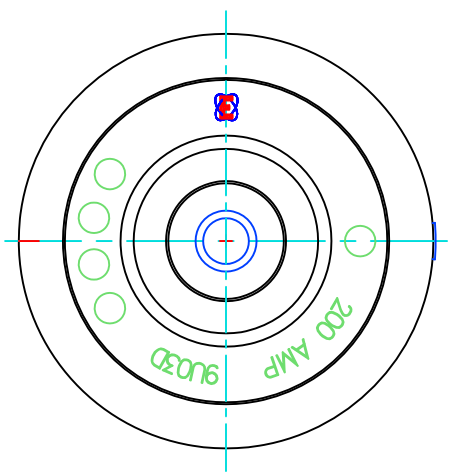
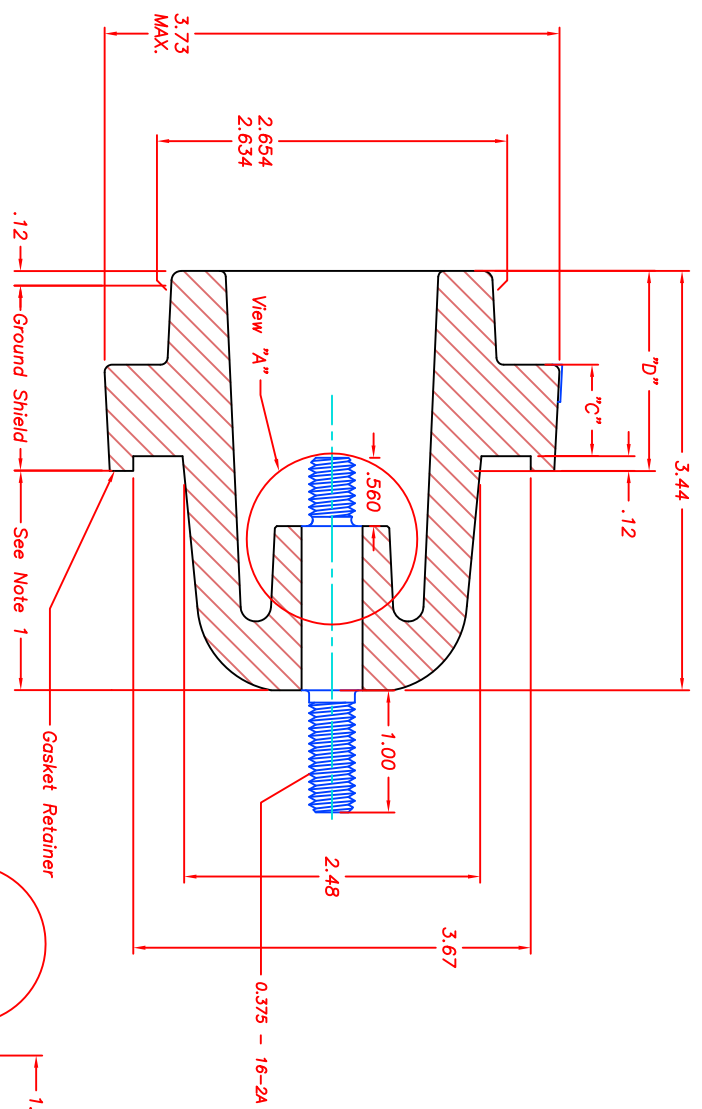


- NOTES:
1. This section should be completely immersed under a suitable head of oil.
 2. Replaceable stud backout torque to 60 in.lbs. min.



MODEL # **	BIL	STUD VIEW	STUD TYPE	"C"	"D"
9U03DAS125	150	A	STANDARD	.75	1.64
9U03DAR125	150	B	REPLACEABLE	.75	1.64

** Model #s followed by a "G" are supplied with a loose gasket.
 ** Model #s followed by a "C" are supplied with a loose gasket and a flange.



ERMCO COMPONENTS INC

UNLESS OTHERWISE SPECIFIED, TOLERANCES ARE:
 SURFACES: 2 PL DEC ± 3 PL DEC ± ANGLES: ± DEG

TITLE: **OUTLINE (150 BIL BUSH WELL)**

CONT ON SH: **32B038009**

FIRST MADE FOR: **OD GSK RTR (.75" Thick Flange)**

REVISIONS	
1	K. Carroll 3-Aug-98 Added Sheet 2 and moved DBS and DBR models ECN #F378
2	K. Carroll 21-Oct-98 Deleted Sheet 2 ECN #F436
3	STULPIN 20-JAN-99 CHG GE LOGO TO ERMCO UPDATED TEMPLATE
4	STULPIN 26-JUN-00 CHG BIL FRM 125 TO 150 REMVD 9U03DAS 150, DAR150
5	STULPIN 29-SEPT-00 ADDED MODEL # FOLLOWED BY "C" NOTE ECN F623
6	Adams 8/30/04 ADDED BACKOUT TORQUE 60 IN-LB ECN B150
7	Adams 8/25/08 Insert thread type ECN B418

MADE BY: K. Carroll 08-April-97
 ISSUED BY: Nicholas Adams 8/25/08

APPROVAL: [Signature]

ECI

CONT ON SH: **32B038009**

PRINTS TO: [Blank]

ECI-BTL