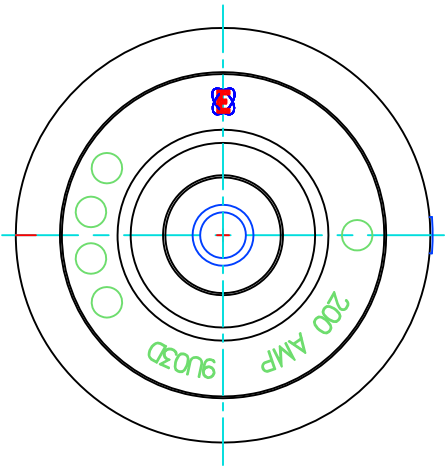


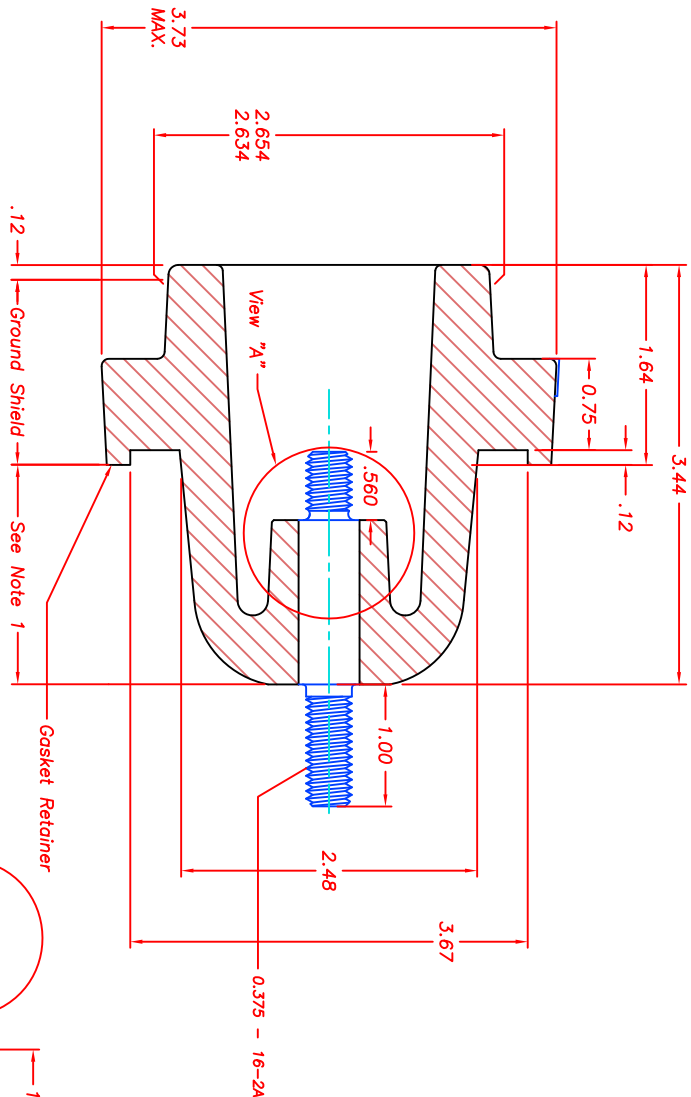
NOTES:

1. This section should be completely immersed under a suitable head of oil.
2. - Replace stud using 5/32" hex allen wrench.  
- Torque to 100 IN.LBS. +/- 10 IN.LBS.  
- Order replaceable stud to model# 9U09AAW271  
- Backout torque to 60 IN.LBS. min.



MODEL #	**	BIL	STUD VIEW	STUD TYPE	WEIGHT	AMPS	VOLTAGE KV
9U03DAS125		150	A	STANDARD	11lb 0.4oz	200	21.1
9U03DAR125		150	B	REPLACEABLE			

\*\* Model #s followed by a "C" are supplied with a loose gasket.  
 \*\* Model #s followed by a "C" are supplied with a loose gasket and a steel flange.  
 Replaceable stud CAT# 9U09AAW271  
 Nitrite gasket CAT# 7920K108P38  
 Steel flange CAT# 9U09AAW267  
 Stainless steel flange CAT# 9U09AAW268



**ERMCO COMPONENTS INC**

TITLE: **OUTLINE (150 BIL BUSH WELL)**

CONT ON SH: **32B038009**

FIRST MADE FOR: **OD GSK RTR (.75" Thick Flange)**

UNLESS OTHERWISE SPECIFIED, TOLERANCES ARE	2 PL DEC	3 PL DEC	ANGLES	DEG
SURFACES	±	±	±	DEG

REVISIONS	
1	K. Carroll 3-Aug-98 Added Sheet 2 and moved DBS and DBR models ECN #F378
2	K. Carroll 21-Oct-98 Deleted Sheet 2 ECN #F436
3	STULPIN 20-JAN-99 CHG GE LOGO TO ERMCO UPDATED TEMPLATE
4	STULPIN 26-JUN-00 CHG BIL FRM 125 TO 150 REMVD 9U03DAS 150, DAR150
5	STULPIN 29-SEPT-00 ADDED MODEL # FOLLOWED BY "C" NOTE ECN F623
6	Adams 8/30/04 ADDED BACKOUT TORQUE 60 IN-LB ECN B150
7	Adams 8/25/08 Insert thread type ECN B418
8	N. Adams 7/06/11 Add notes, AMPS, and Weight ECN B855

MADE BY: **K. Carroll 08-April-97**

ISSUED BY: **Nicholas Adams 7/06/11**

APPROVAL: **ECI**

CONT ON SH: **32B038009**

SH: **PRINTS TO**