



32B928010
CONT ON SH 2
SH 1

OUTLINE (OPERATING DETAIL)

UNLESS OTHERWISE SPECIFIED, TOLERANCES ARE SURFACES ± 2 PL DEC ANGLES FIRST MADE FOR OPERATING DETAIL

Replaces 32B928005, 32B928006, B2511106, & 32B928004. INSTALLATION OF CIRCUIT BREAKERS IN TRANSFORMERS

THIS INSTRUCTION APPLIES TO THE ASSEMBLY AND ADJUSTMENT OF CIRCUIT BREAKERS IN TRANSFORMERS. THIS INSTRUCTION APPLIES TO THE ASSEMBLY AND ADJUSTMENT OF CIRCUIT BREAKERS IN TRANSFORMERS. THIS INSTRUCTION APPLIES TO THE ASSEMBLY AND ADJUSTMENT OF CIRCUIT BREAKERS IN TRANSFORMERS.

- 1. BOLT BREAKER FINELY TO ITS SUPPORT.
2. ASSEMBLE ARM TO CIRCUIT BREAKER.
3. INSTALL THE OPERATING HANDLE ASSEMBLY IN THE BOLT BREAKER AND TIGHTEN THE CLAMPING NUT TO THE OPERATING HANDLE.
4. WITH BREAKER OPEN, AND WITH HANDLE IN CORRECT POSITION, ADJUST THE THREADED CONNECTION BETWEEN ARM AND LINK UNTIL THE HOLE IN THE ARM MAY BE LINED UP WITH THE HOLE IN THE OPERATING SHAFT.
5. TO CONNECT THE ARM TO THE OPERATING SHAFT AND USE FINGERS TO PREVENT THE COTTER PIN FROM FALLING OUT, BY MEANS OF THE OPERATING HANDLE RESET THE BREAKER (CLOSE IT), OBSERVE THE POSITION OF SIGNAL LIGHT SWITCH, (THE BREAKER MAY BE TRIPPED MANUALLY BY ROTATING THE TRIP FUNCTION OF STEP #5 PERFORM FREELY WITHIN THE LIMITS OF TRAVEL FOR THE HANDLE.
6. POSITION CIRCUIT BREAKER CALIBRATION CONTROL MECHANISM AT THE NORMAL POSITION. POSITION THE CIRCUIT BREAKER CALIBRATION CONTROL MECHANISM AT THE NORMAL POSITION. POSITION THE CIRCUIT BREAKER CALIBRATION CONTROL MECHANISM AT THE NORMAL POSITION. POSITION THE CIRCUIT BREAKER CALIBRATION CONTROL MECHANISM AT THE NORMAL POSITION.

Table with columns: CATALOG NUMBER, FIG NO, SHFT, A*, H*, F*, M*, ITEM 4, ITEM 5. Contains data for various circuit breaker components.

Table with columns: CATALOG NUMBER, FIG NO, SHFT, A*, H*, F*, M*, ITEM 4, ITEM 5. Contains data for various circuit breaker components.

Table with columns: CATALOG NUMBER, FIG NO, SHFT, A*, H*, F*, M*, ITEM 4, ITEM 5. Contains data for various circuit breaker components.

Table with columns: CATALOG NUMBER, FIG NO, SHFT, A*, H*, F*, M*, ITEM 4, ITEM 5. Contains data for various circuit breaker components.

Table with columns: CATALOG NUMBER, FIG NO, SHFT, A*, H*, F*, M*, ITEM 4, ITEM 5. Contains data for various circuit breaker components.

Table with columns: CATALOG NUMBER, FIG NO, SHFT, A*, H*, F*, M*, ITEM 4, ITEM 5. Contains data for various circuit breaker components.

REVISIONS table with columns: DATE, BY, DESCRIPTION. Includes entries for N. Adams and K. Carroll with dates from 03/10/10 to 06/24/09.

APPROVAL: ECI. 32B928010 SH 1

ERMCO COMPONENTS INC

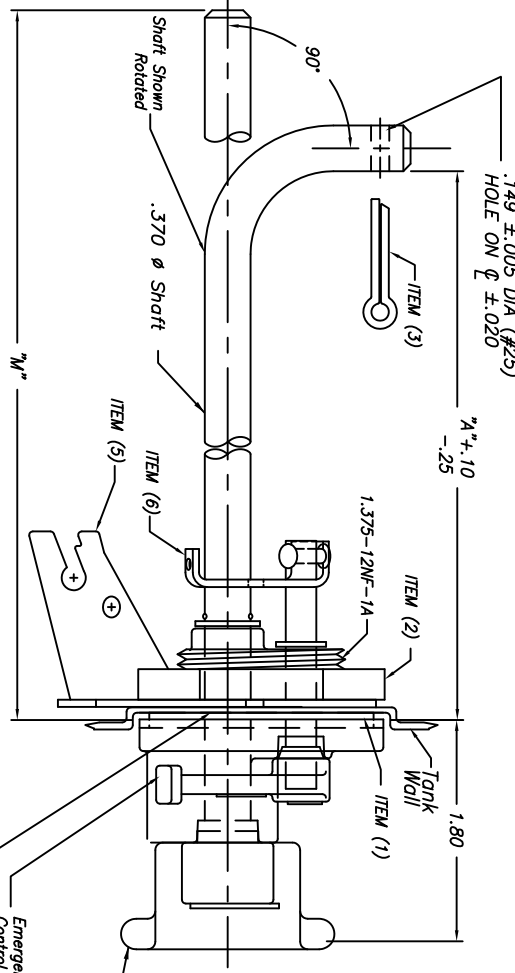
TITLE
OUTLINE (OPERATING DETAIL)

CONT ON SH 3
32B928010
SH 2

UNLESS OTHERWISE SPECIFIED, TOLERANCES ARE

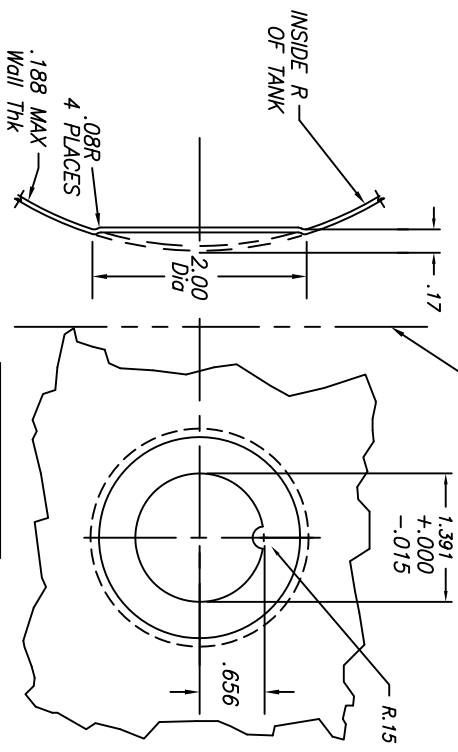
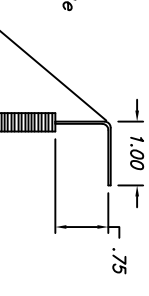
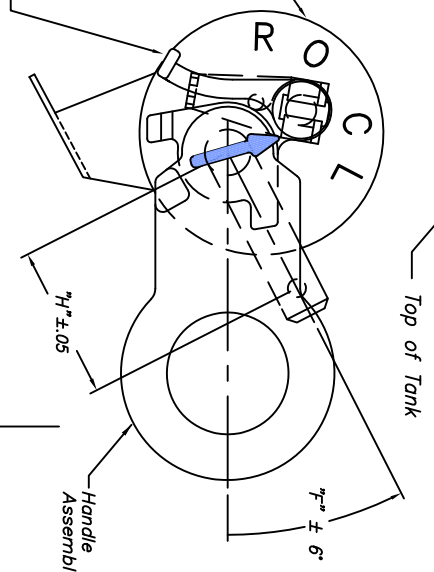
SURFACES	± .020	2 PL DEC	± .005	3 PL DEC	± .005	ANGLES	± .005	DEG
----------	--------	----------	--------	----------	--------	--------	--------	-----

FIRST MADE FOR
Operating Detail



Emergency Overload Control Lever

See Sketch "K" For Hole Details



SKETCH "K"

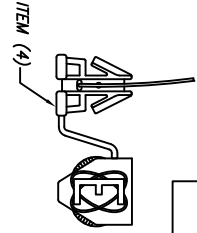


FIGURE 1

SKETCH "C"

Secure Tube in Place By Squeezing Ends of Holder

ITEM NO	NAME	CATALOG NO
1	GASKET	5111ZEX3299
2	NUT	4391ZR1099
3	COTTER PIN	47122C1299
4	METER SEAL	7589ZAB399
5	SUPPORT	7591ZH8999
6	LEVER	7591ZH8099

ISSUED BY: N. Adams 2/13/17

MADE BY: K. Carroll 22-April-97

APPROVALS

ECI

CONT ON SH 3

32B928010
SH 2

ECI-BTL

PRINTS 10

REVISIONS

21	N. Adams 7/6/16	ADDED CAT# 7574ZQ0199, 0499 0599, & 0699 ECN B1002
22	N. Adams 9/27/16	Chgd. info on sh. 1 for 7574ZM8999 ECN B1008
23	N. Adams 2/13/17	Add ZS0599 & update Fig 11 on sh. 6. ECN B1019
16	Nicholas Adams 10/26/07	Added ZM8999, 9099, 9199, 9299. ECN B372
17	Nicholas Adams 11/06/07	Added 7574ZM9499 ECN B374
18	N. Adams 6/24/09	Added Cat. # 7574ZM9699 ECN B482
19	N. Adams 03/10/10	ADDED CAT# 7574ZM9799 & 7574ZM9899 ECN#F1045
20	N. Adams 01/27/14	Added Columns (Item 4, Item 5) on sh 2 & ZQ0299 ECN B886

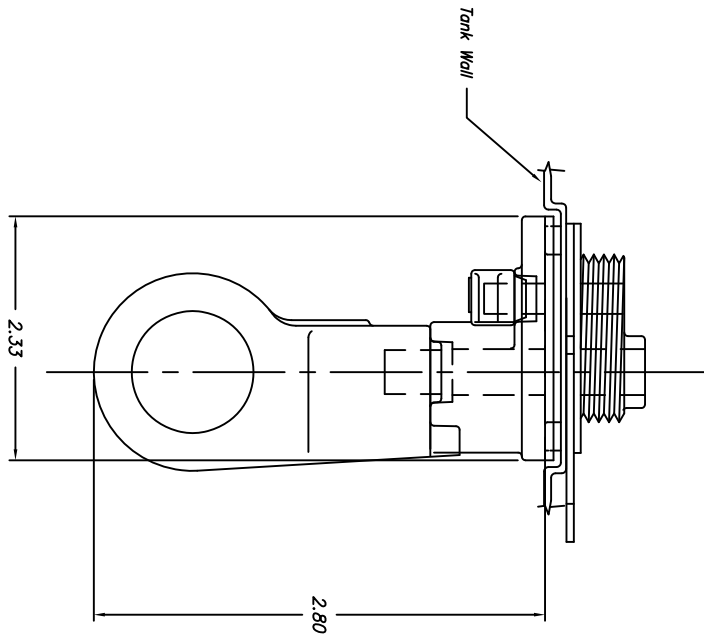


FIGURE 3

(Otherwise Same as FIGURE 1)

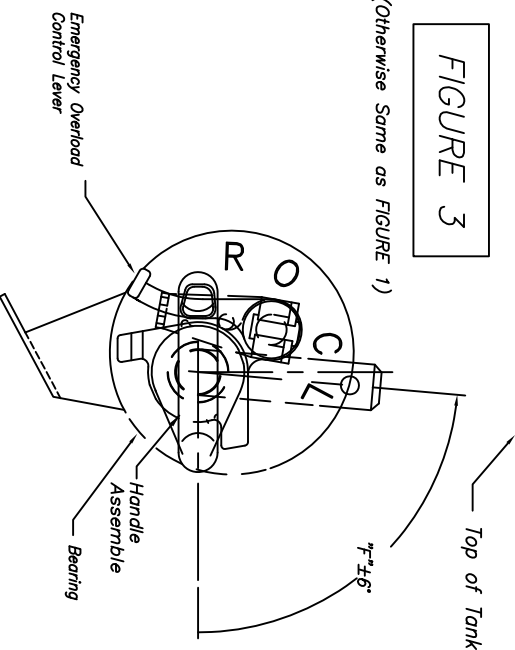


FIGURE 2

(Otherwise Same as FIGURE 1)

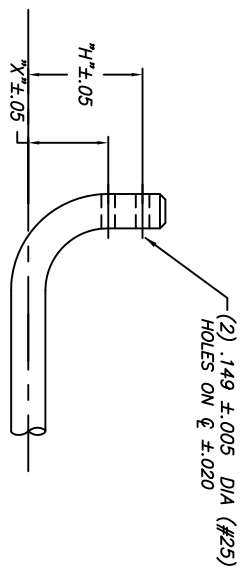


FIG	"H"	"X"	OTHERWISE SAME AS
04	1.75	1.38	F01
05	1.75	1.38	F03
06	2.00	1.50	F03
07	2.00	1.45	F08

ERMCO COMPONENTS INC

UNLESS OTHERWISE SPECIFIED, TOLERANCES ARE

SURFACES	2 PL DEC	3 PL DEC	ANGLES
✓	±	±	± DEG

TITLE

32B928010

CONT ON SH 4

SH 3

OUTLINE (OPERATING DETAIL)

FIRST MADE FOR

Operating Detail

Replaces 32B928005, 32B928006, B25511006, & 32B928004

REVISIONS	
21	N. Adams 7/6/16 ADDED CAT#7574ZQ0199, 0499 0599, & 0699 ECN B1002
22	N. Adams 9/27/16 Chgd. info on sh. 1 for 7574ZM8999 ECN B1008
23	N. Adams 2/13/17 Add ZS0599 & update Fig 11 on sh. 6. ECN B1019
16	Nicholas Adams 10/26/07 Added ZM8999, 9099, 9199, 9299. ECN B372
17	Nicholas Adams 11/06/07 Added 7574ZM9499 ECN B374
18	N. Adams 6/24/09 Added Cat. # 7574ZM9699 ECN B482
19	N. Adams 03/10/10 ADDED CAT#7574ZM8799 & 7574ZM8999 ECN#F1045
20	N. Adams 01/27/14 Added Columns (Item4, Item 5) on sh 2 & ZQ0299 ECN B886

MADE BY: K. Carroll 22-April-97

ISSUED BY: N. Adams 2/13/17

APPROVAL

ECI

CONT ON SH 4

32B928010

SH 3

ECI-BTL

PRINTS 10

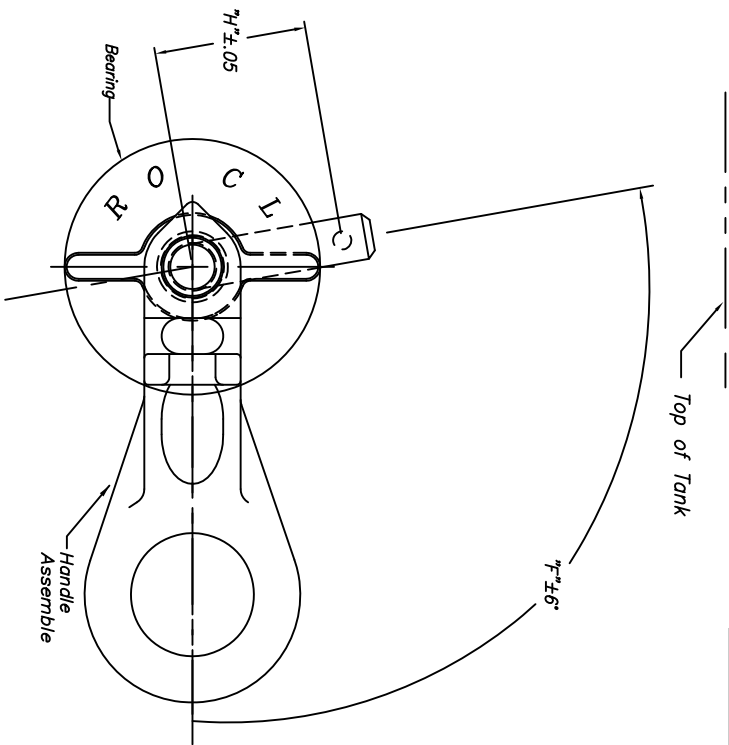


FIGURE 8

(Otherwise Same as FIGURE 1)

UNLESS OTHERWISE SPECIFIED, TOLERANCES ARE			
SURFACES	±	±	±
✓	2 PL DEC	3 PL DEC	ANGLES DEG
TITLE		FIRST MADE FOR	
OUTLINE (OPERATING DETAIL)		Replaces 32B928005, 32B928006, B2551J106, & 32B928004	
32B928010		Operating Detail	
SH 4		Operating Detail	

REVISIONS	
23	N. Adams 2/13/17 Add ZS0599 & update Fig 11 on sh. 6. ECN B1019
16	Nicholas Adams 10/26/07 Added ZM8999, 9099, 9199, 9299. ECN B372
17	Nicholas Adams 11/06/07 Added 7574ZM9499 ECN B374
18	N. Adams 6/24/09 Added Cat. # 7574ZM9699 ECN B482
19	N. Adams 03/10/10 ADDED CAT#7574ZM9799 & 7574ZM8999 ECN#F1045
20	N. Adams 01/27/14 Added Columns (Item4, Item 5) on sh 2 & ZQ0299 ECN B886
21	N. Adams 7/6/16 ADDED CAT#7574ZQ0199, 0499 0599, & 0699 ECN B1002
22	N. Adams 9/27/16 Chgd. info on sh. 1 for 7574ZM8999 ECN B1008

ISSUED BY: N. Adams 02/13/17
 MADE BY: K. Carroll 22-April-97
 APPROVALS
 ECI
 CONT ON SH 5
 32B928010
 SH 4

ERMCO-BTL
 PRINTS

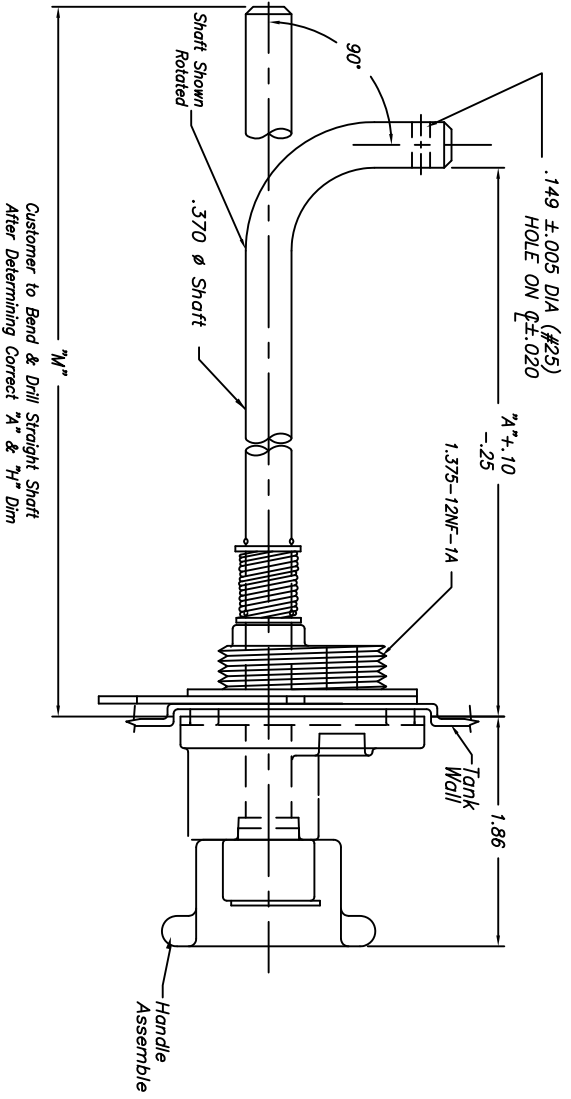
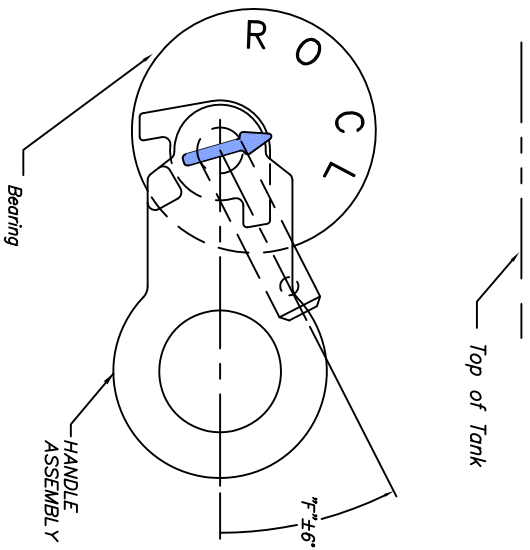


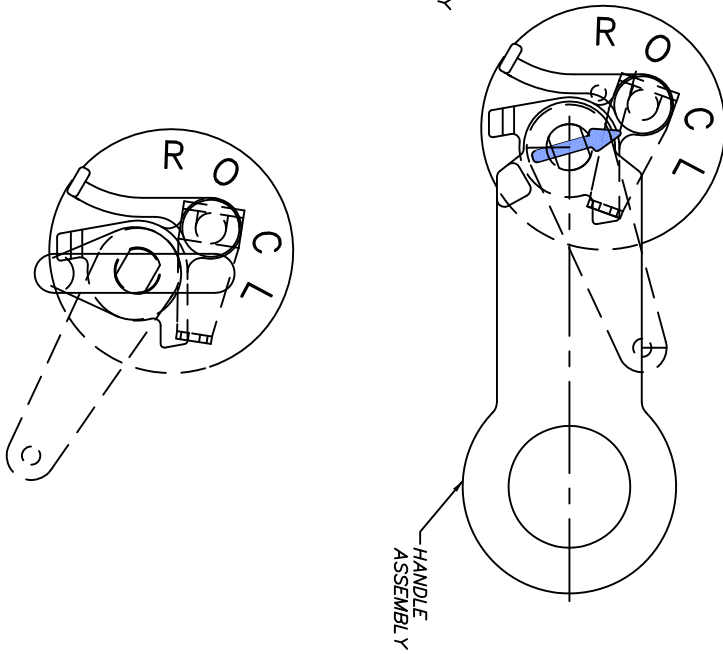
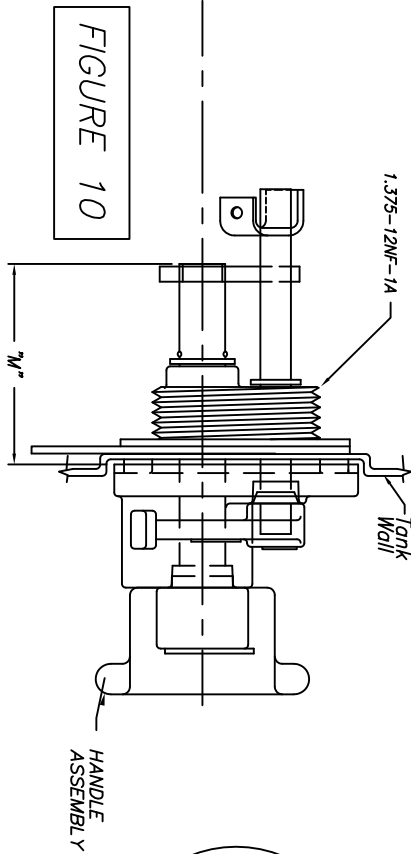
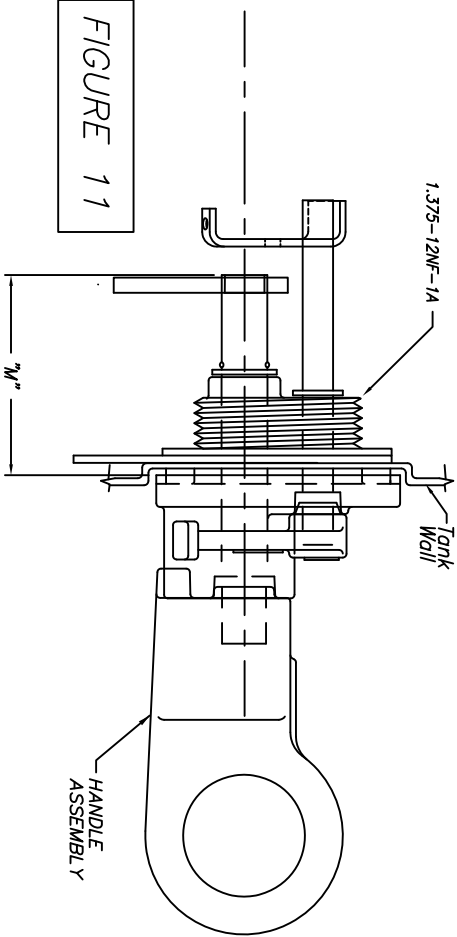
FIGURE 9
(Otherwise Same as FIGURE 1)

		TITLE OUTLINE (OPERATING DETAIL)	
UNLESS OTHERWISE SPECIFIED, TOLERANCES ARE SURFACES 2 PL DEC ± ANGLES 3 PL DEC ± DEG ±		CONT ON SH 6 SH 5	
FIRST MADE FOR Replaces 32B928005, 32B928006, B2551J106, & 32B928004		Operating Detail	



REVISIONS	
21	N. Adams 7/6/16 ADDED CAT#7574ZQ0199, 0499 0599, & 0699 ECN B1002
22	N. Adams 9/27/16 Chgd. info on sh. 1 for 7574ZM8999 ECN B1008
23	N. Adams 2/13/17 Add ZS0599 & update Fig 11 on sh. 6. ECN B1019
16	Nicholas Adams 10/26/07 Added ZM8999, 9099, 9199, 9299. ECN B372
17	Nicholas Adams 11/06/07 Added 7574ZM9499 ECN B374
18	N. Adams 6/24/09 Added Cat. # 7574ZM9699 ECN B482
19	N. Adams 03/10/10 ADDED CAT#7574ZM9799 & 7574ZM9899 ECN#F1045
20	N. Adams 01/27/14 Added Columns (Item4, Item 5) on sh 2 & ZQ0299 ECN B886

MADE BY: K. Carroll 22-April-97
 ISSUED BY: N. Adams 2/13/17
 APPROVALS: ECI
 CONT ON SH 6
32B928010
 SH 5
 ERMCO-BTTL
 PRINTS



Top of Tank



UNLESS OTHERWISE SPECIFIED, TOLERANCES ARE:
 SURFACES 2 PL DEC
 ANGLES 3 PL DEC
 DECS ±

TITLE
OUTLINE (OPERATING DETAIL)
 CONT ON SH 6
 32B928010
 SH 6

Replaces 32B928005, 32B928006, B2551J106, & 32B928004

FIRST MADE FOR

Operating Detail

REVISIONS	
20	N. Adams 01/27/14 Added Columns (Item 4, Item 5) on sh 2 & ZQ0299 ECN B886
21	N. Adams 7/6/16 ADDED CAT#7574ZQ0199, 0499 0599, & 0699 ECN B1002
22	N. Adams 9/27/16 Chgd. info on sh. 1 for 7574ZM8999 ECN B1008
23	N. Adams 2/13/17 Add ZS0599 & update Fig 11 on sh. 6. ECN B1019
16	Nicholas Adams 10/26/07 Added ZM8999, 9099, 9199, 9299. ECN B372
17	Nicholas Adams 11/06/07 Added 7574ZM9499 ECN B374
18	N. Adams 6/24/09 Added Cat. # 7574ZM9699 ECN B482
19	N. Adams 03/10/10 ADDED CAT#7574ZM9799 & 7574ZM9899 ECN#F1045
	ECI-BTL
	PRINTS

MADE BY: K. Carroll 08-May-98 ECN #347
 ISSUED BY: N. Adams 2/13/17
 APPROVAL: ECI
 CONT ON SH 32B928010
 SH 6