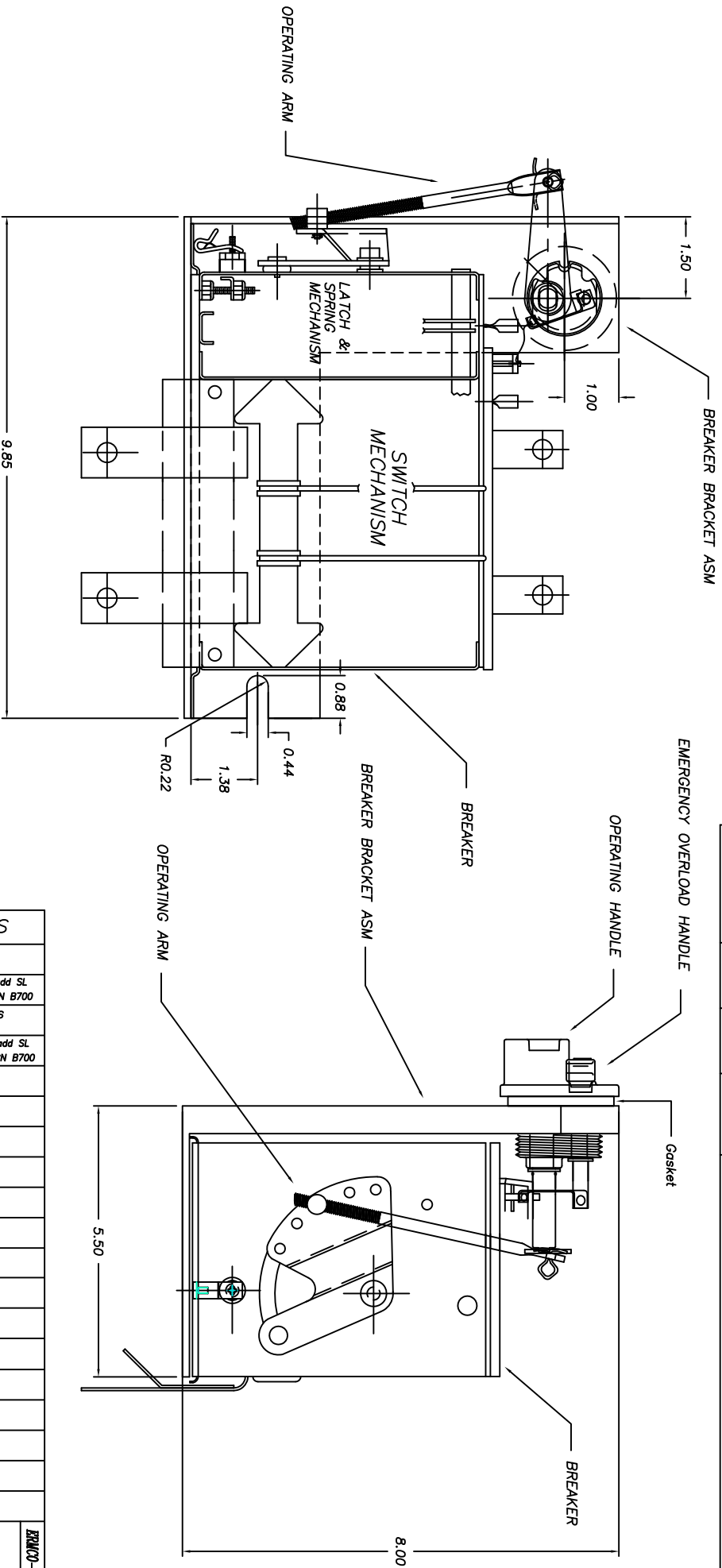


# FOR MOUNTING ON FLAT SURFACE



UNLESS OTHERWISE SPECIFIED, TOLERANCES ARE

SURFACES	±	ANGLES	±	DEG
2 PL DEC	±	3 PL DEC	±	DEG

TITLE  
**OUTLINE (BREAKER W/ BRACKET)**  
 SH 1  
 32B138003  
 CONT ON SH 2  
 FIRST MADE FOR  
 T13 & T14 BKR W/BACKET

F01

11/11

A2-6

REVISIONS		DATE	BY	APPROVALS	ECL	32B138003	SH 1
1	N. Adams 11/22/11 Remove #Phase column, add SL Bulb Column on Sh. 2 ECN B700						
2	Nicholas Adams 11/22/11 Remove #Phase column, add SL Bulb Column on Sh. 2 ECN B700	11/22/11	Nicholas Adams				

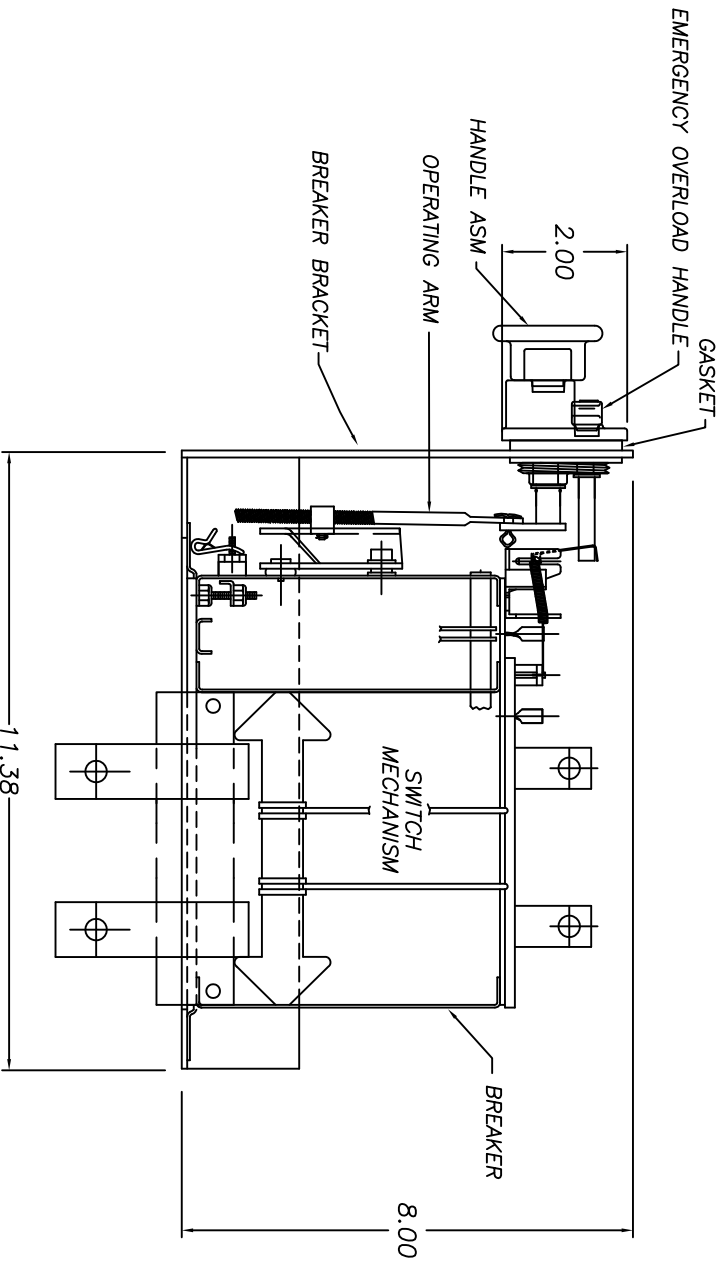
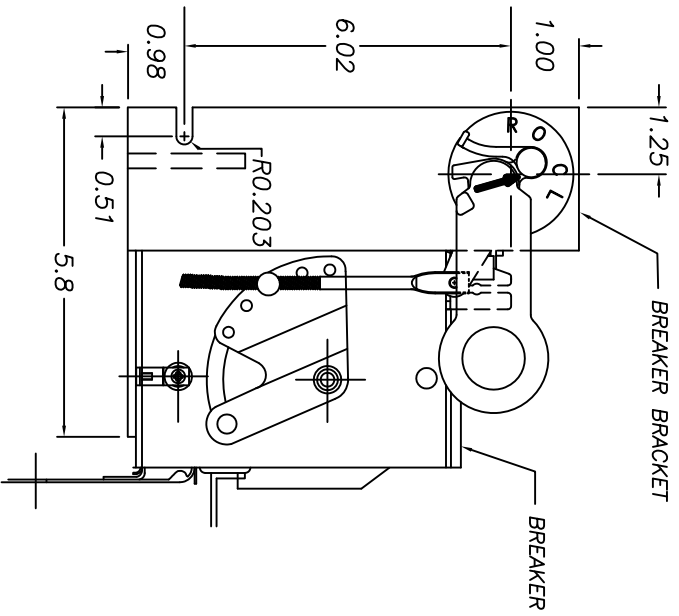
ISSUED BY: Nicholas Adams 11/22/11

ERMCO-BTL

PRINTS TO



**FOR MOUNTING ON CURVED SURFACE**



FO1

UNLESS OTHERWISE SPECIFIED		<b>ERMCO COMPONENTS, INC</b>		32B138004
SURFACES		TITLE		CONT ON SH 2
✓	TOLERANCES	2 PL DEC ±	3 PL DEC ±	ANGLES ± DEG
		OUTLINE (BREAKER W/BACKET)		SH 1
		FIRST MADE FOR CPO T13 & T14 BKR W/BACKET (ROUND TANK)		

REVISIONS		DATE	BY	APPROVAL	ECI	CONT ON SH 2
1	Nicholas Adams 01/28/2010 Update Sheet 1 Dim. ECN B525	9/29/06	Nicholas Adams			32B138004
2	Nicholas Adams 11/22/11 Remove #Phase column, add SL Bulb Column on Sh. 2 ECN B700	11/22/11	Nicholas Adams			32B138004

The information contained on this document is proprietary to Ermco Components Inc. and may not be used for any other purpose than those expressly authorized by ECI.

ECI-BTL  
PRINTS TO  
SH 1

